




2024 Annual Report



NATIONAL
ACADEMY
of MEDICINE



Connect with us at NAM.edu

NAMedicine@nas.edu | X 

500 5th Street, NW | Washington, DC 20001

As we reflect on 2024, I am proud of the National Academy of Medicine's leadership in advancing science, technology, and innovation as the foundation for health and medicine. It has been an eventful year when the nation underwent its 2024 Presidential election. In late 2024, we began to prepare for a new US administration and undertook initiatives such as *Vital Directions* and *The Lancet* paper "Strategic imperatives for health in the USA: a roadmap for the incoming presidential administration" to advise the incoming administration on the priorities for US health and medicine. We increased the visibility of our work by launching in the *New England Journal of Medicine* a new series, "From the NAM," that publishes important health policy works from the NAM and the National Academies. The papers published include insights on Long COVID, biomedical research, generative AI, and climate change and health.

In October, we published *The State of the US Biomedical Research Enterprise: Strategies for Achieving a Healthier America*, a comprehensive analysis of scientific advancements, systemic challenges, and challenges to the global competitiveness of biomedical innovation in the United States. This publication underscores the need to coordinate national strategy, identify sustainable funding, prioritize workforce development, and ensure broad access to the benefits of research. Strengthening our biomedical ecosystem is vital for scientific progress and improving health outcomes alike.

Another first in 2024, we were proud to establish the annual National Health Workforce Well-Being Day — recognized by the US Congress — as part of our Action Collaborative for Clinician Well-Being and Resilience. This milestone underscores our commitment to supporting health professionals. We also launched the Change Maker Campaign, a coordinated effort of nearly 400 organizations implementing recommendations from our *National Plan for Health Workforce Well-Being*. These efforts call for systemic change to address clinician burnout, improve workplace conditions, and ensure a resilient health workforce.

Throughout the year, we responded swiftly to emerging issues. We hosted a workshop on the sustainability of the global HIV/AIDS response in partnership with the Department of State. As we approach the 2030 goal of eradicating HIV/AIDS as a public health issue, challenges like declining political commitment and funding shortfalls must be addressed. The workshop identified key strategies, including strengthening PEPFAR's sustainability, expanding groundbreaking prevention tools, and fostering local leadership.

Our Annual Meeting Scientific Symposium focused on bridging science, practice, and policy to advance mental health. The discussions at this convening highlighted comprehensive solutions, and we are now

developing a follow-on publication to capture recommendations.

The NAM Leadership Consortium continued its vital work in fostering a learning health system, with dynamic convenings and collaborative initiatives throughout the year. The Consortium announced members appointed to its Commission on Investment Imperatives for a Healthy Nation, which is focused on identifying opportunities for cross-sector alignment necessary to advance health system performance. In December, I coauthored a paper alongside NAM Executive Officer Michael McGinnis and former Institute of Medicine president Harvey Fineberg titled "Shared Commitments for Health and Health Care: A Trust Framework from the Learning Health System." We outlined ten essential qualities to enhance performance, trust, and alignment within the US health system. By fostering shared commitments, we can address longstanding challenges such as system fragmentation and misaligned incentives.

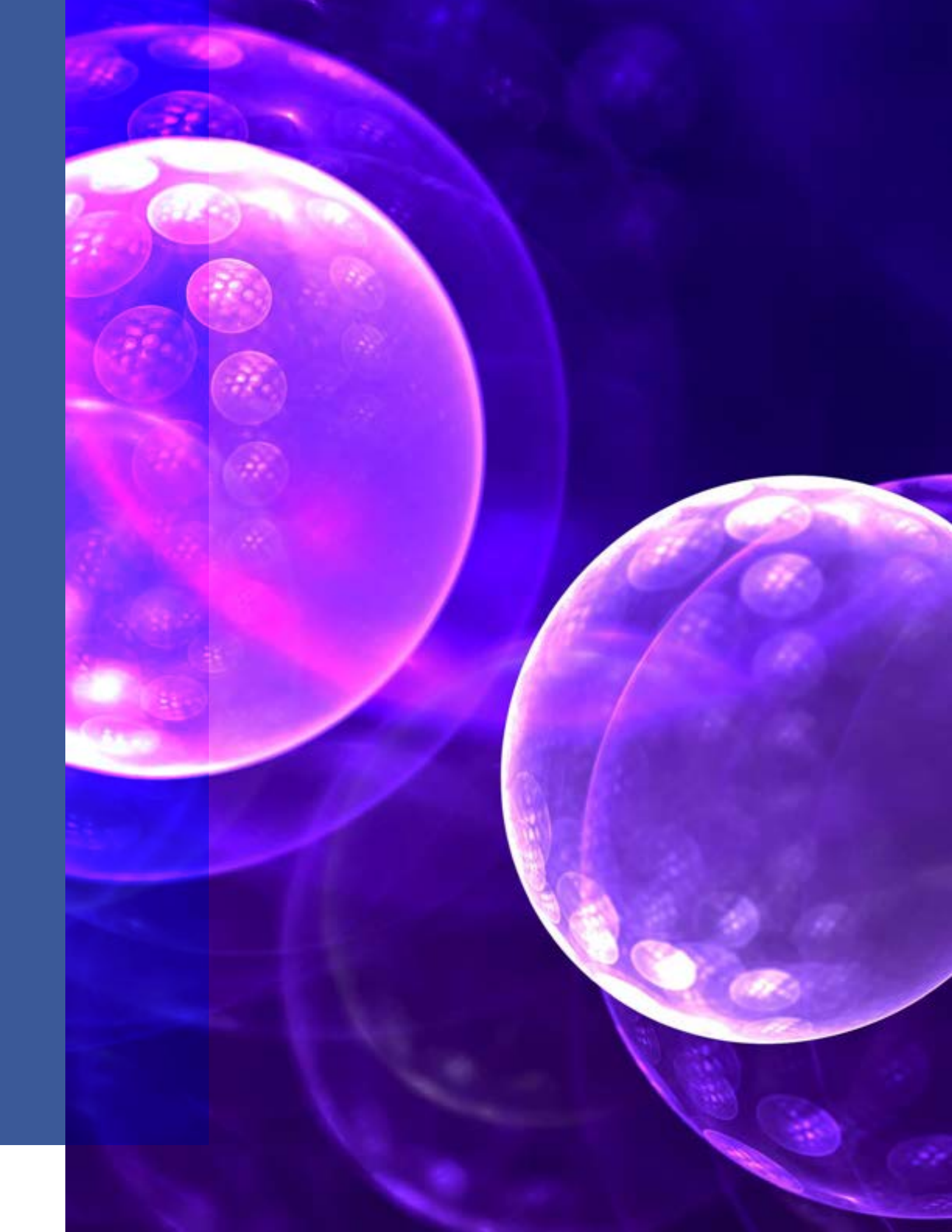
We are committed to galvanizing action around the most pressing health challenges. Among these, climate change remains an existential threat. In April, we launched *Accelerating the Climate and Health Movement*, an ambitious effort to mobilize the health sector to protect health, build resilience, and prevent further harm to the environment. With 370 organizations already engaged, this initiative continues to gain momentum. We also held our inaugural Climate and Health Day and welcomed hundreds of attendees, a success we built upon in 2025 with the second gathering.

As we look ahead, I am deeply grateful for your support, dedication, and vision. I look forward to all that we will accomplish together in the coming year.

VICTOR J. DZAU

President, National Academy of Medicine
May 2025







Contents

2 **2024–2025 Council**

3 **Organizational Chart**

5 **Program Highlights**

Responding to Pressing Issues

Advising on Health & Science Policy

Tackling Grand Challenges & Advancing Bold Ideas

12 **Featured Consensus Reports from the National
Academies of Sciences, Engineering, and Medicine**

17 **Member Highlights**

Members Elected in 2024

2024 Nobel Prize in Physiology or Medicine

National Medal of Science and National Medal of Technology
and Innovation

In Memoriam

25 **Awards**

NAM Member Awards

Gustav O. Lienhard Award for Advancement of Health Care

Rhoda and Bernard Sarnat International Prize in Mental Health

David and Beatrix Hamburg Award for Advances in Biomedical Research
and Clinical Medicine

Cecil Awards

31 **Fellowships & Emerging Leaders**

39 **Finances**

41 **2024 Honor Roll of Donors**

National Academy of Medicine

2024–2025 Council

Officers

VICTOR J. DZAU, MD

NAM Council Chair
National Academy of Medicine

ELENA FUENTES-AFFLICK, MD, MPH

Home Secretary
Association of American Medical Colleges

CARLOS DEL RIO, MD

International Secretary
Emory University School of Medicine

Members At-Large

MAUREEN LICHTVELD, MD, MPH

NAM Council Vice Chair
University of Pittsburgh

L. EBONY BOULWARE, MD, MPH

Advocate Health

SUSAN J. CURRY, PHD

College of Public Health
University of Iowa

KAREN B. DESALVO, MD, MPH, MSC

Google

JOSÉ J. ESCARCE, MD, PHD

David Geffen School of Medicine
Fielding School of Public Health
Department of Medicine
University of California, Los Angeles

EVA L. FELDMAN, MD, PHD

ALS Center of Excellence
University of Michigan Health System

MAE C. JEMISON, MD

The Jemison Group, Inc.

CATO T. LAURENCIN, MD, PHD

The Cato T. Laurencin Institute for Regenerative Engineering
University of Connecticut

KELSEY C. MARTIN, MD, PHD

Simons Foundation

LINDA A. MCCAULEY, PHD

Nell Hodgson Woodruff School of Nursing
Emory University

JUANITA L. MERCHANT, PHD, MD

Division of Gastroenterology and Hepatology
University of Arizona College of Medicine

BERNICE A. PESCOSOLIDO, PHD

Indiana University

CHARLES SAWYERS, MD

Memorial Sloan Kettering Cancer Center
Howard Hughes Medical Institute

MARK A. SCHUSTER, MD, PHD

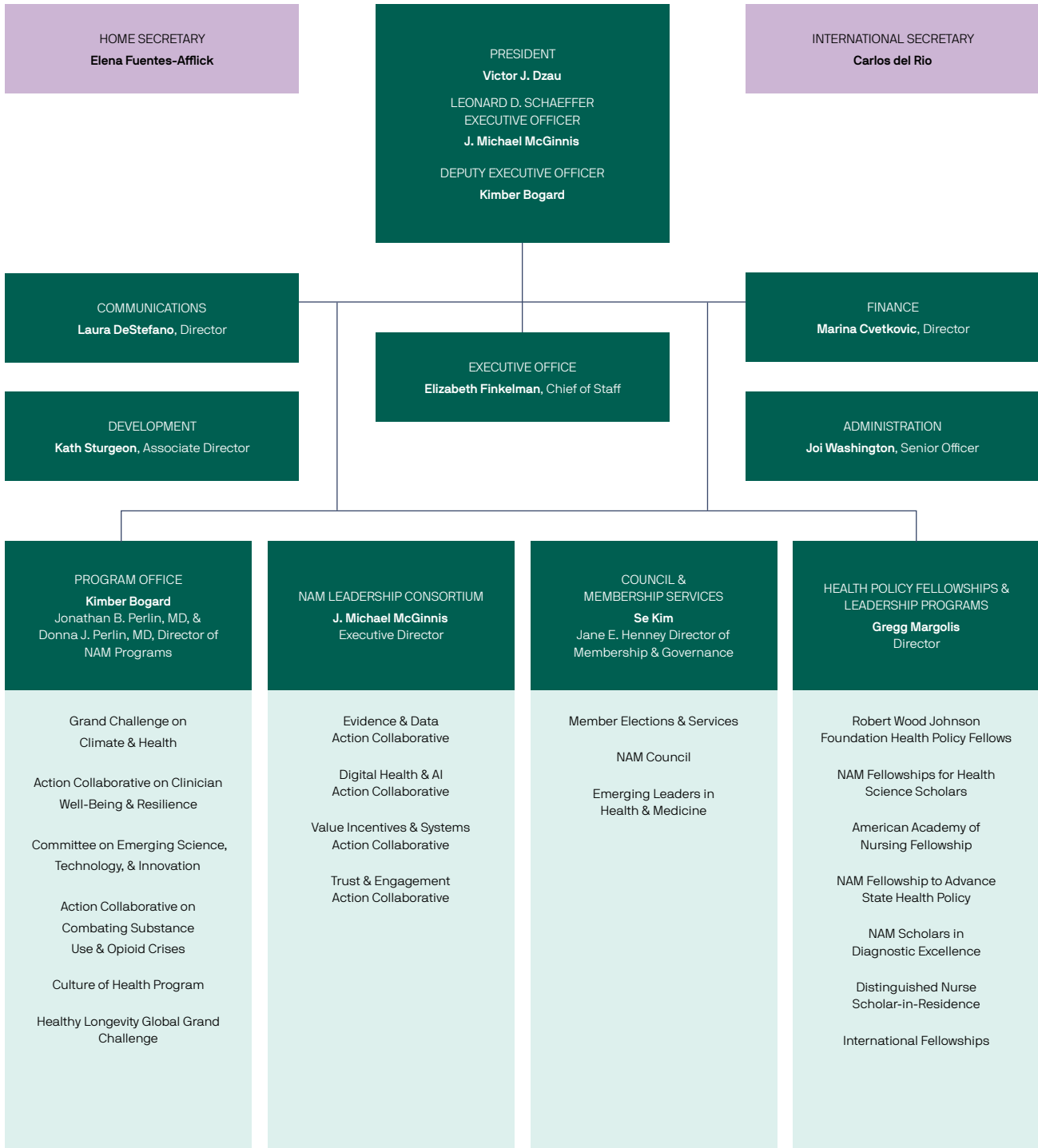
Kaiser Permanente Bernard J. Tyson School
of Medicine

CHRISTINE E. (KRICKET) SEIDMAN, MD

Howard Hughes Medical Institute
Harvard Medical School
Brigham and Women's Hospital

National Academy of Medicine

Organizational Chart







Program Highlights

Responding to Pressing Issues

Advising on Health & Science Policy

Tackling Grand Challenges & Advancing Bold Ideas



Responding to Pressing Issues

Supporting the Health Workforce

In 2024, we made significant strides in elevating clinician well-being as a national priority. In March, we launched the first annual **Health Workforce Well-Being (HWWB) Day** alongside our partners, marking March 18 as a national day of recognition through a US Senate resolution. The inaugural celebratory event on Capitol Hill featured the US Surgeon General, members of Congress, and key health leaders, and emphasized the urgent need to support health professionals.

The NAM Clinician Well-Being Collaborative also produced a **Photovoice project**, an interactive photo gallery that visually captures health leaders' reflections on workforce well-being and the fight against burnout. This project highlights real-world examples of how organizations are prioritizing well-being.

The **Change Maker Campaign** grew to nearly 400 organizations, all committed to institutionalizing well-being as a long-term value. Last year, the NAM launched the **Change Maker in Action Webinar Series** to advance the national movement for health workforce well-being. The first webinar in the series highlighted recognition and credentialing programs, voluntary initiatives that signal organizations' dedication to supporting their workforce.

In December, we hosted an event on **Orienting AI Toward Health Workforce Well-Being** in partnership with UC San Diego Health. Experts discussed AI's potential to both alleviate or exacerbate workforce challenges and shared insights on navigating the rapidly evolving landscape.

Combating the Substance Use & Opioid Crises

In 2024, the NAM Action Collaborative on Combating Substance Use and Opioid Crises launched the **Core Competency Implementation Pilot Project**, selecting **16 sites across 11 states and Washington, DC**, to implement the “3Cs Framework for Pain and Unhealthy Substance Use.” This framework, developed to establish a minimum standard of competence for all health professionals, aims to close practice gaps in pain management and substance use care while promoting coordinated, high-quality, and person-centered care.

The pilot sites, including academic medical centers, addiction treatment programs, and professional associations, tailor implementation activities to their settings and help identify opportunities for broader adoption. Pilot site representatives and leaders in health education, care delivery, and policy gathered at a final convening in Washington, DC, to share findings and chart a path toward advancing substance use care.

Through the Action Collaborative, the NAM also hosted a **three-part workshop series** on strategies to strengthen innovative and effective cross-sector action at the state and local levels. The series connected 73 participants from 13 states, including leaders at the federal, state, and county/local levels working across health care, public health, social services, emergency response, law enforcement, and criminal-legal sectors. Participants discussed critical barriers, strategies to enhance collaboration to overcome them, and developed action plans to implement in their own settings.

In July, we partnered with the National Academy for State Health Policy to host a **Harm Reduction Roundtable**, bringing together state health leaders from across the United States to share strategies for implementing overdose prevention and harm reduction initiatives. Insights from this discussion were published in “**Challenges and Opportunities for Strengthening Harm Reduction at the State Level,**” outlining key takeaways and strategies.



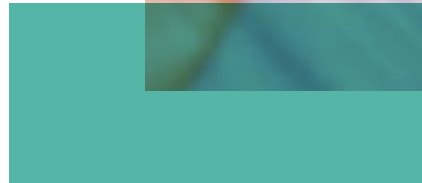
Advancing Health for Everyone, Everywhere

Our Culture of Health Program, supported by the Robert Wood Johnson Foundation, continues to drive efforts to support health and well-being for everyone in the United States. Through research, partner engagement, and real-time learning, the program builds and shares knowledge to support effective action across communities.

In 2024, we hosted a **workshop at the American Public Health Association's Annual Meeting**, developed in collaboration with George Washington University's Center for Community Resilience. The session explored how systemic factors shape health outcomes and experts shared lessons learned from community-driven approaches and examined the interconnected roles of education, employment, and health care.

Additionally, the NAM hosted a **public hybrid meeting** in July to discuss systemic and structural changes needed to improve health across the nation. This event highlighted solutions, built momentum for future publications, and emphasized the role of community in driving meaningful change.

The Culture of Health Program remains committed to translating evidence into action and equipping change makers with the tools needed to build healthier futures.



Advising on Health & Science Policy

Advancing a Responsible Biomedical Innovation Ecosystem

In May, the NAM convened experts to shed light on the potential unintended consequences of advancements in biomedical science and emphasize the crucial need for equity in innovation. The workshop proceedings lay the groundwork for a future where innovation in health and medicine ensures scientific progress serves society responsibly.

Transforming the US Health System

The NAM Leadership Consortium accelerated efforts to drive health system transformation through a series of convenings, collaborative initiatives, and strategic projects. The Consortium's **biannual Members' Meetings** provided a forum for health leaders to examine the impact of system fragmentation and explore strategies to improve alignment. Discussions focused on shared commitments, investment imperatives, and the role of emerging technologies like AI in shaping the future of health care.

Throughout the year, the Consortium's **Action Collaboratives** gathered experts and stakeholders to tackle critical issues. The Trust & Engagement Action Collaborative explored the role of incentives in fostering meaningful community engagement and examined the impact of trust in medical decision-making. The Evidence & Data Action Collaborative focused on optimizing public and private health data, laying the groundwork for a 2025 expert assessment. The Digital Health & AI Action Collaborative investigated the potential of large language models and AI, considering responsible development and their implications for workforce transformation. The Value Incentives & Systems Action Collaborative worked on refining

outcome measures to better align health care payments with improved health outcomes.

A major milestone was the announcement that nineteen Commissioners were appointed to the **Commission on Investment Imperatives for a Healthy Nation**. The Commission seeks to address systemic fragmentation, misaligned incentives, and opportunities to improve health system performance. Five expert workstreams within the Commission provide foundational insights into key areas such as health financing, digital infrastructure, and private sector investments.

Two implementation coalitions played a pivotal role in broadening the Commission's impact. The **Communications Coalition** worked to build a compelling narrative on the importance of cross-sector alignment, ensuring that the Commission's findings are valuable for policymakers and the public. Simultaneously, the **Philanthropic Coalition for Community Mobilization** engaged regional and local philanthropic organizations to amplify community perspectives and drive grassroots initiatives.

Through these coordinated efforts, the NAM is advancing a vision for a more effective and integrated health system that prioritizes alignment, innovation, and shared responsibility in pursuit of better health outcomes for all.

NAM Leadership Consortium Publications



Valuing America's Health: Aligning Financing to Reward Better Health and Well-Being

The Valuing America's Health Special Publication explores opportunities to transform the current US health and health care system to one that promotes whole person and whole population health in response to declining American life expectancy related to the COVID-19 pandemic, opioid epidemic, high burden of chronic disease, and systemic and structural inequities, among other issues. The publication emphasizes the need for a bold vision and sustainable financing strategies to prioritize health and well-being for all, with authors highlighting the importance of building a movement to prioritize health, repairing systemic failures, holding stakeholders accountable, controlling health care costs, incentivizing health promotion, adopting collaborative financing and policy-making approaches, and empowering individuals and communities in health decision-making.

“Artificial Intelligence in Health, Health Care, and Biomedical Science: An AI Code of Conduct Principles and Commitments”

This commentary, released in April 2024, presents concepts and content that the AI Code of Conduct Steering Committee believes to be important for a Code of Conduct framework to be used across those involved in preliminary development and application of AI in health, health care, and biomedical science.

“Shared Commitments for Health and Health Care: A Trust Framework from the Learning Health System”

This commentary, released in December 2024, presents the Learning Health System Shared Commitments as a “trust framework” for the common good to help combat the fragmentation, misplaced incentives, and structural inequities that consistently erode trust. The paper describes the NAM's development of the Shared Commitments and connects concepts, commitments, and continuous improvement to envision a “Learning Health System at Work.”

Tackling Grand Challenges & Advancing Bold Ideas

Innovation in Healthy Longevity

In 2024, our Healthy Longevity Global Grand Challenge continued to drive innovation and stimulate research to extend the human health span. The NAM and partners issued 96 **Healthy Longevity Catalyst Awards** to innovators around the world, recognizing bold projects with the potential for significant impact.

To highlight the exciting Catalyst Award-winning projects from over the years, we also launched a **Spotlight Story Series** that showcases awardees accelerating research and innovation to improve lives. At the annual **Healthy Longevity Global Summit**, experts across disciplines came together to discuss pressing topics to advance healthy aging for all. Additionally, the NAM held a workshop, **The Societal Implications of Geroscience**, sponsored by AARP and The John A. Hartford Foundation. The workshop explored the ethical, economic, and social implications of emerging research on the biological processes of aging and future clinical interventions.

The Intersection of Climate & Health

Over the past year our Climate Grand Challenge has advanced the health sector's leadership in addressing the urgent health impacts of climate change. In April, we held the first ever **Climate and Health Day** of the US Climate Action Summit, with over 800 attendees joining this seminal event. Featuring leading experts on climate and health, the day's discussions offered new ways of thinking about the challenges, opportunities, and solutions for addressing our current climate and health challenges at individual and global scales.

We also launched the "**Accelerating the National Climate and Health Movement**" initiative and **Climate Action Showcase** resource. To date, 370 organizations have joined the movement, including 49 health systems representing over 800 hospitals. The fast-growing coalition is mobilizing health-related organizations nationwide and beyond to accelerate climate action to protect human health.

Throughout the year, the NAM Climate Collaborative launched a webinar series, convened 20 Working Group meetings, and held two Members' Meetings, including a public event featuring a frontline physician

from the Hurricane Helene response. The NAM also showcased the Collaborative's impact through a story series featuring leaders from key partner organizations.

The **Climate Communities Network (CCN)** brought together 18 Members and 16 Strategic Partners from across the country to collaborate on tackling climate and health challenges at the community level. Throughout the year, the CCN was featured at key events, including Climate and Health Day, and launched a **Photovoice project**: an interactive map amplifying local voices and highlighting community priorities at the intersection of climate and health, like water quality and emergency preparedness.

We introduced a **feature story series** illustrating the impact of the CCN's collaborative model. Two **Learning Collaboratives** explored youth engagement and technical assistance, while three **Regional Clusters** focused on funding, policy, and youth engagement. The CCN has now entered its second year of work, ensuring that local perspectives shape climate and health solutions.

Featured Consensus Reports

from the National
Academies of Sciences,
Engineering, and
Medicine





Cannabis Policy Impacts Public Health and Health Equity

Over the past several decades, more than half of all US states have legalized cannabis for adult and/or medical use, but it remains illegal at the federal level. The public health consequences of cannabis policy changes have not been comprehensively evaluated.

Therefore, the Centers for Disease Control and Prevention and the National Institutes of Health tasked the National Academies with reviewing cannabis and cannabinoid availability in the United States, assessing regulatory frameworks for the industry with an emphasis on equity, and describing strengths and weaknesses of surveillance systems for cannabis.

The resulting report finds that there has been limited federal guidance to states regarding protecting public health, which has led to inconsistent protection across the states. The report recommends a strategy to minimize public health harms through stronger federal leadership, a robust research agenda, and more.



A Long COVID Definition: A Chronic, Systemic Disease State with Profound Consequences

The lack of a clear and consistent definition for Long COVID presents challenges for policymakers, researchers, public health professionals, clinicians, support services, and patients. As such, the Administration for Strategic Preparedness and Response and the Office of the Assistant Secretary for Health asked the National Academies to assemble a committee of experts to produce a consensus definition for Long COVID. The resulting report, A Long COVID Definition: A Chronic, Systemic Disease State with Profound Consequences, presents the 2024 National Academies' Long COVID Definition, developed based on findings reported in existing literature, as well as stakeholder and patient input.



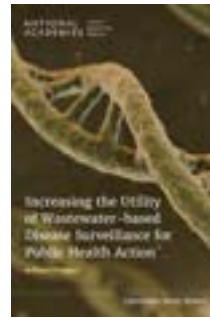
Preventing and Treating Dementia: Research Priorities to Accelerate Progress outlines research priorities and recommends strategies to overcome barriers to progress to advance the prevention and treatment of Alzheimer’s disease and related dementias.



Advancing Research on Chronic Conditions in Women offers recommendations to address gaps in the science on chronic conditions that are specific to or predominately impact women or affect women differently.



Rethinking Race and Ethnicity in Biomedical Research describes nine actionable recommendations and associated resources for advancing the responsible use of race and ethnicity.



Increasing the Utility of Wastewater-based Disease Surveillance for Public Health Action: A Phase 2 Report details technical constraints and opportunities to improve wastewater surveillance for the prevention and control of infectious diseases in the United States.



Launching Lifelong Health by Improving Health Care for Children, Youth, and Families presents a vision for transforming the child and adolescent health care system.



Regulatory Processes for Rare Disease Drugs in the United States and European Union: Flexibilities and Collaborative Opportunities provides recommendations for enhancing and promoting rare disease drug development by improving engagement with people affected by a rare disease, advancing regulatory science, and fostering collaboration between FDA and the European Medicines Agency.



Myopia: Causes, Prevention, and Treatment of an Increasingly Common Disease examines the current understanding of myopia pathogenesis, the causes of its increased prevalence, and knowledge gaps and barriers to progress.



Ending Unequal Treatment: Strategies to Achieve Equitable Health Care and Optimal Health for All reviews major drivers of health care disparities, provides insight into successful interventions, and identifies gaps in the evidence base.



Long-Term Health Effects of COVID-19: Disability and Function Following SARS-CoV-2 Infection presents conclusions from a committee convened to investigate and provide an overview of the current status of diagnosis, treatment, and prognosis of long-term health effects related to Long COVID.



Expanding Behavioral Health Care Workforce Participation in Medicare, Medicaid, and Marketplace Plans examines challenges in ensuring broad access to evidence-based behavioral health care services through Medicare, Medicaid, and Marketplace programs, and proposes strategies to address them.



Evidence Review of the Adverse Effects of COVID-19 Vaccination and Intramuscular Vaccine Administration outlines findings and conclusions from a committee convened to review the epidemiological, clinical, and biological evidence about the relationship between COVID-19 vaccines and specific adverse events, as well as intramuscular administration of vaccines and shoulder injuries.



Living with ALS focuses on an integrated amyotrophic lateral sclerosis (ALS) multidisciplinary care and research system to help facilitate earlier diagnosis and connections to specialty care.



Exploring Linkages Between Soil Health and Human Health finds that to improve soil health, federal agencies need to promote the importance of soil health, support translational research, and develop a coordinated national approach to monitor soil health over time and space.



Advancing Clinical Research with Pregnant and Lactating Populations: Overcoming Real and Perceived Liability Risks explores and finds limited evidence of legal liability for inclusion of pregnant and lactating women in clinical research, contradicting perceptions of heightened liability.



Charting a Future for Sequencing RNA and Its Modifications: A New Era for Biology and Medicine assesses the scientific and technological breakthroughs, workforce, and infrastructure needs to sequence RNA and its modifications, and ultimately understand the roles RNA modifications play in biological processes and disease.



Future State of Smallpox Medical Countermeasures presents findings and conclusions that may inform US Government investment decisions in smallpox medical countermeasures readiness, as well as the official US position on the disposition of live viral collections at future World Health Assembly meetings.



Health Risks of Indoor Exposure to Fine Particulate Matter and Practical Mitigation Solutions offers recommendations to reduce population exposure to fine particulate matter to reduce health impacts on susceptible populations, and to address important knowledge gaps.



The Role of Seafood Consumption in Child Growth and Development examines associations between seafood intake for children, adolescents, and pregnant and lactating women and child growth and development.



Essential Health Care Services Addressing Intimate Partner Violence presents findings from research and deliberations and lays out recommendations for leaders of health care systems, federal agencies, health care providers, emergency planners, and those involved in intimate partner violence research.



Member Highlights

Members Elected in 2024

2024 Nobel Prize in Physiology or Medicine

National Medal of Science and National Medal of
Technology and Innovation

In Memoriam

Members Elected in 2024

TOYIN AJAYI, MD, MPHIL

Cityblock Health

ZOLTAN PIERRE ARANY, MD, PHD

Perelman School of Medicine, University of Pennsylvania

PAOLA ARLOTTA, PHD

Harvard University

CARLOS L. ARTEAGA, MD

Simmons Comprehensive Cancer Center, University of Texas
Southwestern Medical Center

TRACY L. BALE, PHD

University of Colorado School of Medicine

JONATHAN F. BEAN, MD, MPH

Harvard Medical School; New England Geriatric Research
Education and Clinical Center, VA Boston Healthcare System

NINA BHARDWAJ, MD, PHD

Vaccine and Cell Therapy Laboratory, Icahn School of
Medicine at Mount Sinai

MARIA ELENA BOTTAZZI, PHD

National School of Tropical Medicine, Baylor College
of Medicine

KATHRYN H. BOWLES, PHD, RN, FAAN, FACMI

University of Pennsylvania School of Nursing; Center for
Home Care Policy and Research, VNS Health

CHIQUITA BROOKS-LASURE, MPP

Centers for Medicare and Medicaid Services, U.S. Department
of Health and Human Services

ROBERT D. BULLARD, PHD

Bullard Center for Environmental and Climate Justice, Texas
Southern University

JASON A. BURDICK, PHD

BioFrontiers Institute, University of Colorado, Boulder

JENNIFER D. CARLSON, PHD

Sanford School of Social and Family Dynamics, Center for the
Study of Guns in Society, Arizona State University, Tempe

BOB S. CARTER, MD, PHD

Harvard Medical School and Massachusetts General Hospital

STEPHEN JACOB CHANOCK, MD

National Cancer Institute

CHRISTOPHER G. CHUTE, MD, DRPH

Johns Hopkins University

JANINE AUSTIN CLAYTON, MD, FARVO

Office of Research on Women's Health, National Institutes
of Health

I. GLENN COHEN, JD

Harvard Law School, Harvard University

LISA M. COUSSENS, PHD, FAACR, FAIO

Knight Cancer Institute, Oregon Health & Science University

LINDSEY A. CRISWELL, MD, MPH, DSC

National Institute of Arthritis and Musculoskeletal and Skin
Diseases, National Institutes of Health

CHINAZO OPIA CUNNINGHAM, MD, MS

New York State Office of Addiction Services and Supports

LEEMORE DAFNY, PHD

Harvard Business School; Harvard Kennedy School

TERESA A. DAVIS, PHD

Children's Nutrition Research Center, Baylor College
of Medicine

DAVID DRANOVE, PHD

Kellogg School of Management, Northwestern University

PATRICIA C. DYKES, PHD, MA, RN

Center for Patient Safety, Research, and Practice, Brigham and Women's Hospital; Harvard Medical School

PETER JOSEPH EMBÍ, MD, MS, FACP, FACMI, FIAHSI

Vanderbilt University Medical Center

ALICIA FERNANDEZ, MD

University of California, San Francisco

EROL FIKRIG, MD

Yale School of Medicine

SILVIA C. FORMENTI, MD, FAACR, FACR, FASTRO

Weill Cornell Medicine; New York-Presbyterian Hospital

MONIKA KUMARI GOYAL, MD, MSCE

George Washington University; Center for Translational Research, Children's National Hospital

MARCIA CARMEN HAIGIS, PHD

Harvard Medical School

SCOTT DAVID HALPERN, MD, PHD, MBIOETHICS

Palliative and Advanced Illness Research Center, Perelman School of Medicine, University of Pennsylvania

JOSEPH HEITMAN, MD, PHD

Duke University School of Medicine

SALLY LYNN HODDER, MD, FIDSA

West Virginia University Health Sciences

DAVID HUANG, MD, PHD

Casey Eye Institute; Oregon Health & Science University

SHAWNA VELEURA HUDSON, PHD

Rutgers Health; Robert Wood Johnson Medical School, Rutgers University

NOLA M. HYLTON, PHD

University of California, San Francisco

RESHMA JAGSI, MD, DPHIL

Emory University School of Medicine

YISHI JIN, PHD

University of California, San Diego, La Jolla

PETER ANTHONY JONES, PHD, DSC (HON)

Stand Up to Cancer Epigenetics Dream Team; Van Andel Institute

JOSEPH KEAWE'AIMOKU KAHOLOKULA, PHD

John A. Burns School of Medicine, University of Hawai'i at Mānoa

CHRISTINE LAINE, MD, MPH

Annals of Internal Medicine, American College of Physicians; Sidney Kimmel Medical College, Thomas Jefferson University

KENNETH M. LANGA, MD, PHD

University of Michigan, Ann Arbor

HAIFAN LIN, PHD

Yale School of Medicine

MASSIMO LODA, MD

Weill Cornell Medicine; Harvard Medical School; University of Oxford-Lincoln College

BEATRIZ LUNA, PHD

University of Pittsburgh School of Medicine

TRUDY F.C. MACKAY, PHD, FRS

Clemson University

NICOLE MAESTAS, MPP, PHD

Harvard Medical School

DAVID J. MANGELSDORF, PHD

Howard Hughes Medical Institute; University of Texas Southwestern Medical Center

JEANNE MARRAZZO, MD, MPH

National Institute of Allergy and Infectious Diseases, National Institutes of Health

ERICA ELIZABETH MARSH, MD, MSCI

University of Michigan Medical School, Ann Arbor

DAYNA BOWEN MATTHEW, JD, PHD

George Washington University Law School

MARGARET M. MCCARTHY, PHD

University of Maryland – Medicine Institute for Neuroscience
Discovery; University of Maryland School of Medicine

GENEVIEVE B. MELTON-MEAUX, MD, PHD

University of Minnesota, Twin Cities

DAN MERENSTEIN, MD

Georgetown University School of Medicine; Georgetown
University School of Health

FUNDA MERIC-BERNSTAM, MD

University of Texas MD Anderson Cancer Center

MATTHEW J. MILLER, MD, MPH, SCD

Northeastern University

JULIE MORITA, MD

The Joyce Foundation

SALLY C. MORTON, PHD

Knowledge Enterprise; Arizona State University, Tempe

NIKI MARIA MOUTSOPOULOS, DDS, PHD

National Institute of Dental and Craniofacial Research,
National Institutes of Health

AVINDRA NATH, MD

National Institute of Neurological Disorders and Stroke,
National Institutes of Health

JENNIFER B. NUZZO, DRPH, SM

Brown University School of Public Health

SANTA JEREMY ONO, PHD

University of Michigan, Ann Arbor

DAVID PELLMAN, MD

Dana-Farber Cancer Institute; Harvard Medical School

PRISCILLA EYIKOJOKA PEMU, MD, MS, FACP, FAHA

Morehouse School of Medicine

MARY L. PHILLIPS, MD (CANTAB)

University of Pittsburgh

OLIVIER POURQUIÉ, PHD

Brigham and Women's Hospital; Harvard Medical School

MARK R. PRAUSNITZ, PHD

Georgia Institute of Technology

UMA M. REDDY, MD, MPH

Vagelos College of Physicians and Surgeons and Mailman
School of Public Health, Columbia University Irving
Medical Center

JUERGEN ALBRECHT RICHT, DVM, PHD

Kansas State University

SELWYN O. ROGERS JR., MD, MPH, FACS, MAMSE

University of Chicago Medicine

JEFFREY D. ROTHSTEIN, MD, PHD

Brain Science Institute; Packard Center for ALS Research,
Johns Hopkins University School of Medicine

DAVID HENRY ROWITCH, MD, PHD, FMEDSCI, FRIS

University of Cambridge; University of California, San
Francisco; Cedars-Sinai Guerin Children's

DANA GELB SAFRAN, SCD

National Quality Forum; The Joint Commission

CHRISTINE E. SCHMIDT, PHD

University of Florida, Gainesville

NINA F. SCHOR, MD, PHD

National Institutes of Health

DEBORAH SCHRAG, MD, MPH

Memorial Sloan Kettering Cancer Center

EUGENIA SOUTH, MD, MSHP

Perelman School of Medicine, University of Pennsylvania;
University of Pennsylvania Health System

KONSTANTINA M. STANKOVIC, MD, PHD, FACS

Stanford University School of Medicine

DAVID M. STUDDERT, LLB, SCD, MPH

Stanford University School of Medicine; Stanford Law School

LORENZ STUDER, MD

Memorial Sloan Kettering Cancer Center

ALEXIS A. THOMPSON, MD, MPH

Children's Hospital of Philadelphia; Perelman School of
Medicine, University of Pennsylvania

**MATTHEW G. VANDER HEIDEN, MD, PHD**

Koch Institute for Integrative Cancer Research,
Massachusetts Institute of Technology

FAN WANG, PHD

McGovern Institute for Brain Research, Massachusetts
Institute of Technology

DONNA L. WASHINGTON, MD, MPH

Health Equity-QUERI National Partnered Evaluation Center,
Veterans Health Administration; VA Greater Los Angeles
Healthcare System; David Geffen School of Medicine at
University of California, Los Angeles

MITCHELL J. WEISS, MD, PHD

St. Jude Children's Research Hospital

E. JOHN WHERRY, PHD

Perelman School of Medicine, University of Pennsylvania

GAREN J. WINTEMUTE, MD, MPH

University of California, Davis

HAO WU, PHD

Boston Children's Hospital; Harvard Medical School

MARC A. ZIMMERMAN, PHD

University of Michigan School of Public Health

International Members Elected in 2024

JARBAS BARBOSA DA SILVA JR., MD, MPH, PHD

Pan American Health Organization

KELLY CHIBALE, PHD

Holistic Drug Discovery and Development Center, University
of Cape Town

GEORGE COUKOS, MD, PHD

Lausanne University Hospital; Ludwig Institute for Cancer
Research Lausanne Branch

NICHOLAS PETER FRANKS, PHD

Imperial College London

THUMBI NDUNG'U, BVM, PHD

Africa Health Research Institute; University of KwaZulu-Natal

FRIDAY EBHODAGHE OKONOFUA, MD, BSC, MB CHB, PHD, FRCOG, FMCOG, FWACS, FICS

African Center of Excellence in Reproductive Health
Innovation, University of Benin

AZIZ SHEIKH, OBE, FRSE, FMEDSCI

Nuffield Department of Primary Care Health Sciences,
University of Oxford; Usher Institute, University of Edinburgh

JANET KATHLEEN SMYLIE, MD, MPH, FCFP

Well Living House Action Research Centre, Unity Health
Toronto – St. Michaels Hospital; Dalla Lana School of Public
Health, University of Toronto

HENRIK TOFT SØRENSEN, MD, PHD, DRMEDSCI, DRSCI

Aarhus University

SARAH J. TABRIZI, PHD, MBCHB, FMEDSCI, FRS

Huntington's Disease Centre, University College London
Queen Square Institute of Neurology; UK Dementia

2024 Nobel Prize in Physiology or Medicine



Gary Ruvkun

© Nobel Prize Outreach. Photo: Clément Morin

The 2024 Nobel Prize in Physiology or Medicine was awarded jointly to **Gary Ruvkun** and Victor Ambros “for the discovery of microRNA and its role in post-transcriptional gene regulation.” Ruvkun is a dual member of the National Academy of Medicine and National Academy of Sciences (NAS), and Ambros is a member of the NAS.

The two laureates discovered microRNA, a new class of tiny RNA molecules that play a crucial role in gene regulation, revealing a completely new principle of gene regulation that turned out to be essential for multicellular organisms, including humans.

National Medal of Science & National Medal of Technology and Innovation

In 2024, the National Medal of Science was awarded to four NAM members:

Bonnie L. Bassler (Princeton University), **Helen M. Blau** (Stanford University), **Emery Neal Brown** (Harvard Medical School and Massachusetts General Hospital), and **Teresa Kaye Woodruff** (Michigan State University).

The National Medal of Technology and Innovation was awarded to three

NAM members: **Jennifer A. Doudna** (University of California, Berkeley), **Paula T. Hammond** (Massachusetts Institute of Technology), and **Feng Zhang** (Massachusetts Institute of Technology).



In Memoriam

The NAM honors members who passed away between January 1, 2024, and May 1, 2025.

ADAORA A. ADIMORA

LORETTA C. FORD

PHILIP NEEDLEMAN

NANCY E. ADLER

CHARLES FRIED

MARIA I. NEW

NORMAN B. ANDERSON

JOHN I. GALLIN

ELENA NIGHTINGALE

KENNETH I. BERNIS

J. THOMAS GRAYSON

HERBERT PARDES

FLOYD E. BLOOM

SHELDON GREENFIELD

DARWIN J. PROCKOP

MARY BARTLETT BUNGE

DIANE E. GRIFFIN

BENGT SAMUELSSON

LINDA BURNES BOLTON

PAUL F. GRINER

GEROLD L. SCHIEBLER

WILLIAM A. "BILL" CATTERALL

SCOTT M. GRUNDY

IRA SHOULSON

ROBERT "BOB" ARTHUR CHASE

HOWARD H. HIATT

MAXINE SINGER

ROBERT B. COPELAND

KING K. HOLMES

MILDRED THORNTON STAHLMAN

PEDRO M. CUATRECASAS

HOLLY HUMPHREY

S. LEONARD SYME

ROMAN DESANCTIS

V. CRAIG JORDAN

JACK WENNBERG

ALLEN J. DIETRICH

ELLIOTT D. KIEFF

GAIL WILENSKY

CONNE EAVES

DAVID KORN

CHARIS ENG

RONALD D. MILLER

ROBERT M. EPSTEIN

JOHN H. MOXLEY



Awards

NAM Member Awards

Gustav O. Lienhard Award for
Advancement of Health Care

Rhoda and Bernard Sarnat International
Prize in Mental Health

David and Beatrix Hamburg Award for
Advances in Biomedical Research and
Clinical Medicine

Cecil Awards

NAM Member Awards

In 2024, the NAM honored four members for their outstanding service — **Martín-José Sepúlveda**, distinguished university professor, Florida International University; **Linda Birnbaum**, retired, former director, National Institute of Environmental Health Sciences and the National Toxicology Program, and Scholar in Residence, Duke University; **Linda McCauley**, dean, Emory University School of Nursing; and **Robert Phillips**, executive director, Center for Professionalism and Value in Health Care, American Board of Family Medicine.

Sepúlveda received the **Walsh McDermott Medal**, which recognizes a member for distinguished service to the National Academies of Sciences, Engineering, and Medicine over an extended period. Elected to NAM in 2014, he is chair of the NAM's Section 12 on Health Services Administration, Research, Education, and Policy and the Section 12 Membership Committee, and is a member of the Culture of Health Program Advisory Committee. Sepúlveda's contributions include several National Academies roles, including as a member of the Board on Population Health and Public Health Practice and the Board on Children, Youth, and Families, among others. He has served as chair or member of more than 12 study, planning, and advisory committees, including the committee for the consensus report *Safe Work in the 21st Century: Education and Training Needs for the Next Decade's Occupational Safety and Health Personnel*. Sepúlveda has chaired or co-chaired consensus report committees, including the committee for *Shaping Summertime Experiences: Opportunities to Promote Healthy Development and Well-Being for Children and Youth*.



Martín-José Sepúlveda

Birnbaum received the **Adam Yarmolinsky Medal**, which is awarded to a member from a discipline outside the health and medical sciences. Birnbaum, a distinguished toxicologist, was elected to the NAM in 2010 and established and supported the National Academies' Environmental Health Matters Initiative. She served for 10 years as director of the National Institute of Environmental Health Sciences and the National Toxicology Program. Prior to that she spent two decades in scientific leadership roles in the National Health and Environmental Effects Research Laboratory at the US Environmental Protection Agency, including serving as its director. Birnbaum has served in leadership roles at numerous professional organizations, including as president of the Society of Toxicology, and the editorial boards of several journals. Birnbaum has received over 60 awards and honors from the government, professional societies, nonprofit organizations, and academic institutions. Included among these are election to the Collegium Ramazzini, an independent, international academy of experts in the fields of occupational and environmental health; the NIH Director's Award in 2011; and the Surgeon General's Medallion in 2014.



Linda Birnbaum

McCauley and Phillips each received the **David Rall Medal**, which is given to members who have demonstrated distinguished leadership as chair of a study committee or other activity. They are recognized for leading the successful National Academies consensus study committee that produced the 2021 report *Implementing High-Quality Primary Care: Rebuilding the Foundation of Health Care*. As co-chairs, McCauley and Phillips provided unwavering leadership of the committee's work during a global pandemic, with the committee's first meeting held in person in January 2020 and the remainder held remotely. They demonstrated continued commitment to amplifying the report and to the implementation of the committee's recommendations to strengthen the US primary care system. Within a few months of the report's release, McCauley and Phillips convened meetings with public and private sponsors to ensure the report recommendations were understood and that concrete steps were being taken toward implementation. They launched a wide range of efforts to encourage implementation of the report's recommendations, including creating multiple publications tailored to key target audiences, holding dozens of national meetings and workshops to catalyze action, meeting with state and national legislatures, and charging national organizations to be accountable for change.

(L-R): Victor J. Dzau, Linda McCauley, Robert Phillips, and Elena Fuentes-Afflick



Gustav O. Lienhard Award for Advancement of Health Care

Michael Fiore received the 2024 Gustav O. Lienhard Award for Advancement of Health Care in recognition of his unwavering leadership in reducing the toll exacted by tobacco use. Fiore has transformed the way the US medical community treats smoking by addressing tobacco dependence consistently and effectively as an intrinsic element of health care. The award, which honors Fiore's achievements with a medal and \$40,000, was presented at the NAM Annual Meeting in October. Fiore is the University of Wisconsin Hilldale Professor of Medicine and co-founder of the University of Wisconsin Center for Tobacco Research and Intervention.



Michael Fiore

Rhoda and Bernard Sarnat International Prize in Mental Health

Deanna Barch received the 2024 Rhoda and Bernard Sarnat International Prize in Mental Health for her seminal contributions to advancing understanding of the developmental psychopathology and treatment of mental health disorders, in addition to her devoted mentorship of early career investigators. The award, which recognizes Barch's achievements with a medal and \$20,000, was presented at the NAM Annual Meeting in October. Barch is vice dean of research, Gregory B. Couch Professor of Psychiatry, and a professor of psychological and brain sciences and of radiology at Washington University in St. Louis.



Deanna Barch

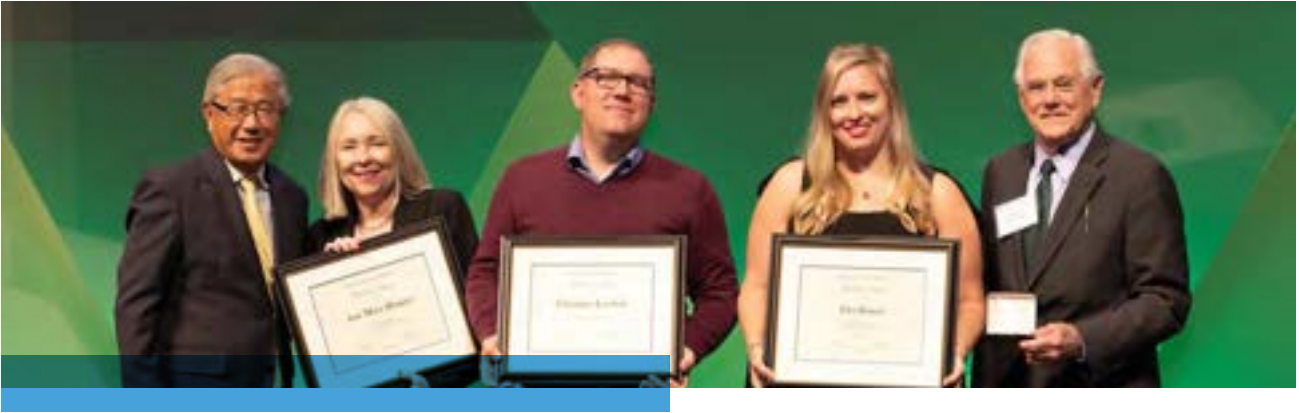
David and Beatrix Hamburg Award for Advances in Biomedical Research and Clinical Medicine



(L-R): Victor J. Dzau, Arlene Helen Sharpe, Gordon James Freeman

Gordon James Freeman and **Arlene Helen Sharpe** are the recipients of the 2024 David and Beatrix Hamburg Award for Advances in Biomedical Research and Clinical Medicine for their breakthrough work identifying costimulatory pathways that control the activation and inhibition of T cell immune responses, leading to new, effective immunotherapies for cancer, autoimmune diseases, and transplant rejection. The award, which recognizes the recipients' achievements with a medal and \$50,000, was presented at the NAM Annual Meeting in October. Freeman is a professor of medicine at Dana-Farber Cancer Institute, Harvard Medical School. Sharpe is the Kolokotronis University Professor and chair of the Department of Immunology at Harvard Medical School.

Cecil Awards



(L-R): Victor J. Dzau, Anne Marie Houppert, Chris Lao Scott, Ellen Kimmel, and J. Michael McGinnis

The Cecil Awards recognize staff from throughout the National Academies who have demonstrated superb skill and commitment in furthering the mission of the NAM: to improve health for all by advancing science, accelerating health equity, and providing independent, authoritative, and trusted advice nationally and globally.

The following individuals were chosen for the 2024 Cecil Awards by a committee composed of NAM members and staff representatives from across the National Academies.

Sandra H. Matthews Cecil Award for Administrative Excellence

Jessica Covington, Administrative Specialist, National Academy of Medicine

Sandra H. Matthews supported three presidents throughout her tenure at the Institute of Medicine, in addition to contributing her guidance and wisdom to many other projects, including the National Academies' African American Histories Program. She is the only staff member to have an award issued in her honor.



Jessica Covington

Cecil Award for Individual Excellence

Elizabeth Boyle, Senior Program Officer, Health and Medicine Division

Cecil Award for Excellence of a Group/Team

Rebecca Morgan, Chris Lao Scott, Anne Marie Houppert, and Ellen Kimmel (Senior Research Librarians)

Fellowships & Emerging Leaders



The NAM administers the following fellowships and leadership programs to build future leadership capacity, promote innovation, and accelerate advances in health, medicine, and biomedical sciences.

Robert Wood Johnson Foundation (RWJF) Health Policy Fellows — offers the nation's most comprehensive fellowship experience at the nexus of health, science, and policy in Washington, DC

Distinguished Nurse Scholar-in-Residence — provides a one-year immersion experience at the NAM for outstanding nurse leaders

NAM Fellowships for Health Science Scholars — offers a number of distinct programs across diverse disciplinary areas of focus for high-potential early-career professionals

State Health Policy Fellowship — pilot program that partners with states to place health professionals in state government offices and provide subject matter expertise and context to local policy deliberations

International Fellowships — provides an opportunity for dedicated health policy specialists from abroad to become directly involved with the work of the NAM and the National Academies and to contextualize our work to a global setting

NAM Scholars in Diagnostic Excellence — supports the implementation and dissemination of programs that advance diagnostic excellence at the national level across disciplines and professions

Emerging Leaders in Health and Medicine — supports exceptional individuals as they develop innovative, creative interdisciplinary approaches to challenges in health and medicine while facilitating mentorship, collaboration, and innovation among emerging leaders, NAM members, and cross-sector experts



2024–2025 RWJF Health Policy Fellows

NICOLLE L. ARTHUN, RN, MSN, CNM, FACNM

Founder

Changing Woman Initiative

Placement: Senator Ben Ray Luján (NM)

SHAMIE DAS, MD, MBA, MPH

Assistant Professor

Department of Emergency Medicine, Emory University School of Medicine

Placement: Senator Tim Scott (SC)

A. RANI ELWY, PHD

Professor of Psychiatry and Human Behavior

Warren Alpert Medical School of Brown University

Placement: Senator Patty Murray (WA)

TRACEY L. HENRY, MD, MPH, MS

Associate Professor of Medicine

Division of General Internal Medicine, Emory University School of Medicine

Placement: Senate Committee on Finance

TONYA MOORE, PHD, RN

Founder and Chief Executive Officer

MooreNOW, LLC

Placement: House of Representatives

SUJITH RAMACHANDRAN, PHD

Associate Professor of Pharmacy Administration

University of Mississippi School of Pharmacy

Placement: Senate Committee on Finance

MICHAEL T. SCHMELTZ, DRPH, MS

Associate Professor

Department of Public Health, California State University, East Bay

Placement: House Committee on Appropriations

NAM Fellowships for Health Science Scholars

Norman F. Gant/American Board of Obstetrics and Gynecology (ABOG) Fellowship

MICHELLE DEBBINK, MD, PHD (2023–2025)

Assistant Professor, Department of Obstetrics and Gynecology

University of Utah School of Medicine

Salt Lake City, UT

James C. Puffer, MD/American Board of Family Medicine (ABFM) Fellowship

STEPHANIE GOLD, MD, FAAFP (2023–2025)

Associate Professor, Department of Family Medicine

University of Colorado

Scholar, Eugene S. Farley, Jr. Health Policy Center

University of Colorado Anschutz Medical Campus

Aurora, CO

SEBASTIAN TONG, MD, MPH (2023–2025)

Assistant Professor, Department of Family Medicine

University of Washington

Seattle, WA

ANITA RAVI, MD, MPH, MSHP (2024–2026)

Founder and Chief Executive Officer

PurpLE Health Foundation

New York City, NY

ALYSSA TILHOU, MD, PHD (2024–2026)

Assistant Professor, Department of Family Medicine

Boston University

Boston, MA

Gilbert S. Omenn Fellowship

RAVI B. PARIKH, MD, MPP (2023–2025)

Associate Professor, Department of Hematology and Medical Oncology

Emory University School of Medicine

Atlanta, GA

ABEM Emergency Medicine Fellowship

CAMERON GETTEL, MD, MHS (2023–2025)

Assistant Professor, Department of Emergency Medicine

Clinical Investigator, Center for Outcomes Research and Evaluation

Co-Director, Emergency Scholars Fellowship

Yale University

New Haven, CT

Greenwall Fellowship in Bioethics

SANKET DHRUVA, MD, MHS (2023–2025)

Assistant Professor, Section of Cardiology

Department of Medicine

University of California, San Francisco

Staff Physician

San Francisco VA Health Care System

San Francisco, CA

NAM Fellowship in Pharmacy

JENNIFER BACCI, PHARMD, MPH, BCACP, FCCP (2024–2026)

Endowed Associate Professor in Innovative Pharmacy Practice, Department of Pharmacy

University of Washington School of Pharmacy

Seattle, WA

NAM Fellowship in Osteopathic Medicine

BREANNE M. JAQUA, DO, MPH (2024–2026)

Associate Professor, Department of Clinical
Science Education

A.T. Still University School of Osteopathic Medicine
Mesa, AZ

American Academy of Nursing (AAN) Fellowship

ROXANA C. CHICAS, PHD, RN, FAAN (2024–2026)

Assistant Professor
Nell Hodgson Woodruff School of Nursing
Emory University
Atlanta, GA

NAM Fellowship to Advance State Health Policy

YOHUALLI B. ANAYA, MD, MPH (2024–2026)

Associate Professor, Department of Family Medicine and
Community Health

University of Wisconsin School of Medicine and Public Health
Madison, WI

Foundation for Anesthesia Education and Research (FAER) NAM Fellowship

JULIE K. FREED, MD, PHD (2024–2026)

Executive Vice Chair and Associate Professor, Department
of Anesthesiology

Medical College of Wisconsin
Milwaukee, WI



2024–2025 State Health Policy Fellows

BRANDI FREEMAN, MD, MS (COLORADO)

Associate Professor of Pediatrics
Department of Pediatrics
Attending Physician, Child Health Clinic
Children's Hospital of Colorado
Aurora, CO

RACHEL BERNARD, MD, MPH, FACP (WISCONSIN)

Assistant Professor
Department of Medicine
Medical College of Wisconsin
Milwaukee, WI

MEREDITH HUGHES, JD, MPH (PENNSYLVANIA)

Assistant Professor
Department of Health Policy and Management
University of Pittsburgh School of Public Health
Pittsburgh, PA

International Fellowships

NAM International Health Policy Fellowship

KIM HEI-MAN CHOW, PHD, MPHIL (2023–2025)

Assistant Professor
School of Life Sciences
The Chinese University of Hong Kong
Hong Kong Special Administrative Region, China

NAM-HKU Fellowship in Global Health Leadership

NASON TAN, MBBS, MPH (2023–2025)

Senior Lecturer
Division of Community Medicine and Public Health Practice
LKS Faculty of Medicine School of Public Health
The University of Hong Kong
Hong Kong Special Administrative Region, China

2024–2025 NAM Scholars in Diagnostic Excellence

This listing includes the titles of project proposals submitted by Scholars as part of their application.

CARL BERDAHL, MD, MS

Assistant Professor, Departments of Medicine and
Emergency Medicine

Cedars-Sinai Medical Center
Los Angeles, CA

*“Partnering with Patients and Clinicians to Improve Diagnosis
in the Emergency Department”*

JESSICA GOLD, MD, PHD

Assistant Professor, Department of Pediatrics
Northwell Health/Feinstein Institute of Medical Research
New Hyde Park, NY

*“Mainstreaming Genomic Testing to Increase Diagnostic
Accessibility for Adults with Intellectual and
Developmental Disabilities”*

ANDREW A. GONZALEZ, MD, JD, MPH

Assistant Professor, Department of Surgery
Indiana University School of Medicine
Indianapolis, IN

*“An Equity-Grounded Approach to Developing Computational
Phenotypes for Peripheral Arterial Disease”*

BAT-ZION HOSE, PHD

Research Scientist
National Center for Human Factors in Healthcare
MedStar Health
Washington, DC

*“A Work System Design for Effective Teamwork in the
Diagnostic Process”*

NATALIA KHALAF, MD, MPH

Assistant Professor of Medicine, Section of Gastroenterology
and Hepatology

Center for Innovations in Quality, Effectiveness and
Safety (IQEST)

Michael E. DeBakey Veterans Affairs Medical Center
Baylor College of Medicine
Houston, TX

*“Implementing Digital Quality Measures into Learning Health
Systems for Diagnostic Excellence in Cancer Care”*

SANJIV MEHTA, MD, MBE

Assistant Professor of Anesthesiology and Critical
Care Medicine

Department of Anesthesiology and Critical Care Medicine
Children’s Hospital of Philadelphia
University of Pennsylvania Perelman School of Medicine
Philadelphia, PA

*“Transforming Our Approach to Pediatric Clinical Deterioration
with Diagnostic Reasoning Interventions”*

MATTHEW NIELSEN, MD, MS, FACS

Rhodes Distinguished Professor
Chair of Urology
University of North Carolina School of Medicine
Chapel Hill, NC

*“Advancing Diagnostic Excellence and Health Equity in
Prostate Cancer Through Enhanced Quality in MRI and
MRI Fusion Biopsy”*

GEZZER ORTEGA, MD, MPH

Assistant Professor, Department of Surgery
Brigham and Women’s Hospital
Harvard Medical School
Boston, MA

*“Improving Technology-Based Interpreter Services and
Resources for Patients with Limited English Proficiency”*



VERITY SCHAYE, MD, MHPE

Assistant Dean for Education in the Clinical Sciences
 Associate Professor, Department of Medicine
 New York University Grossman School of Medicine
 New York City, NY

*“Diagnosis Aid: Development of an Artificial Intelligence-
 Based Diagnostic Performance Feedback System”*

SHAZIA M. SIDDIQUE, MD, MSHP

Assistant Professor of Medicine, Division of Gastroenterology
 University of Pennsylvania Perelman School of Medicine
 Philadelphia, PA

*“Narrowing Health Disparities in the Diagnostic Evaluation of
 Iron Deficiency Anemia”*

GARY WEISSMAN, MD, MSHP

Assistant Professor of Medicine and Informatics,
 Departments of Medicine and Biostatistics,
 Epidemiology, and Informatics

University of Pennsylvania Perelman School of Medicine
 Philadelphia, PA

*“Assessing the Safety of an AI-Based Diagnostic Decision
 Support in Primary Care for Older Adults”*

2024 Emerging Leaders in Health and Medicine Scholars

AZA STEPHEN ALLSOP, MD, PHD

Assistant Professor of Psychiatry, Yale School of Medicine;
Director, Center for Collective Healing, Howard University

ANWESHA DEY, PHD

Distinguished Scientist and Executive Director, AI - Oncology,
Cancer Biology, Genentech

JOSEPH L. DIELEMAN, PHD

Associate Professor, Institute for Health Metrics and
Evaluation, University of Washington

UTIBE R. ESSIEN, MD, MPH

Assistant Professor of Medicine, David Geffen School of
Medicine, and Associate Vice Chair of Equity, Diversity,
and Inclusion, Department of Medicine, University of
California, Los Angeles

DAVID FAJGENBAUM, MD, MBA, MSC

Founding Director, Center for Cytokine Storm Treatment
and Laboratory, and Associate Professor of Medicine,
University of Pennsylvania

FORUM KAMDAR, MD, PHD, FACC

Assistant Professor, Cardiovascular Division and Lillehei
Heart Institute, University of Minnesota

MARGARET MCNAIRY, MD, MSC

Associate Professor of Medicine, Division of General Internal
Medicine and Center for Global Health, Weill Cornell
Medicine

DANIEL J. SIEGWART, PHD

W. Ray Wallace Distinguished Chair in Molecular Oncology
Research and Professor, Departments of Biomedical
Engineering and Biochemistry and the Simmons
Comprehensive Cancer Center, University of Texas
Southwestern Medical Center

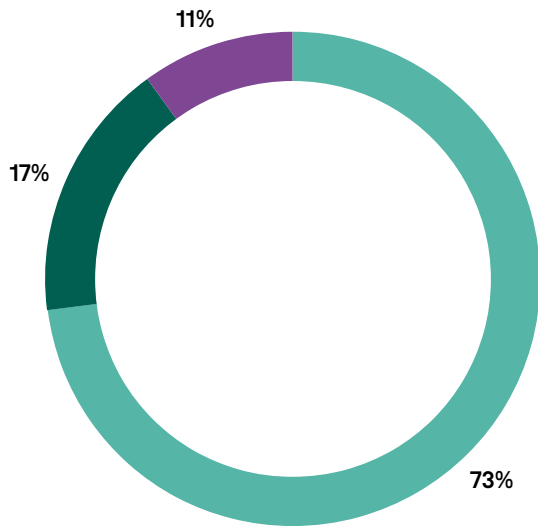
CATHERINE TCHEANDJIEU, DVM, PHD

Assistant Investigator, Gladstone Institutes, and Assistant
Professor, Department of Epidemiology and Biostatistics,
University of California, San Francisco

HANSEL TOOKES, MD, MPH

Professor of Medicine, Miller School of Medicine, University
of Miami

Finances

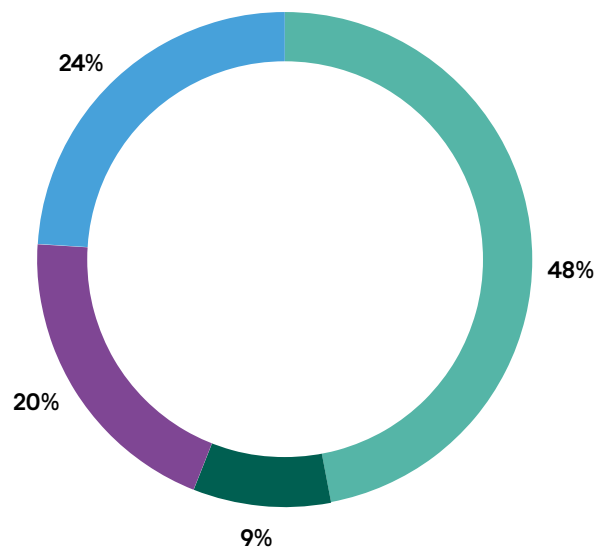


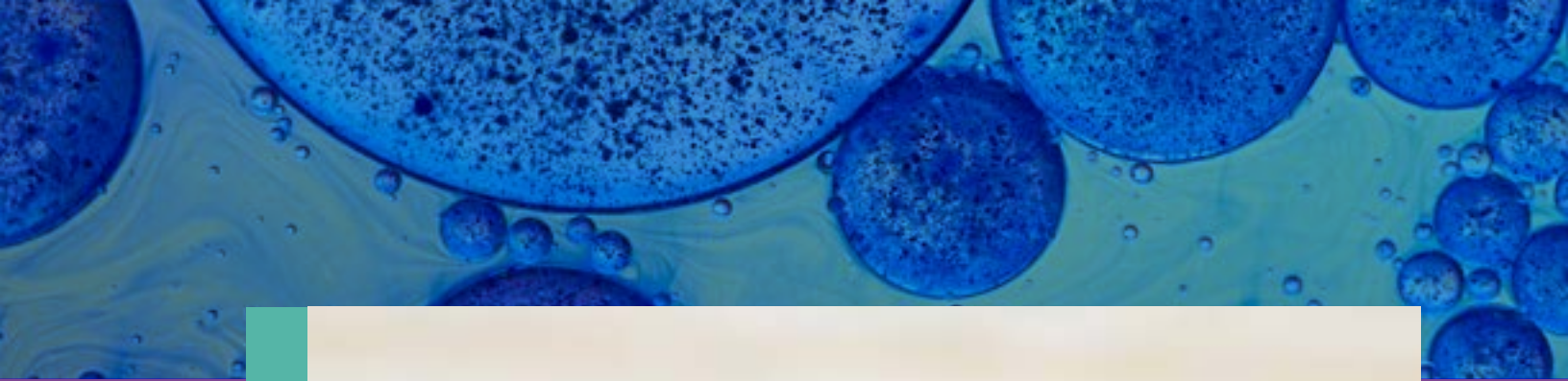
Revenues

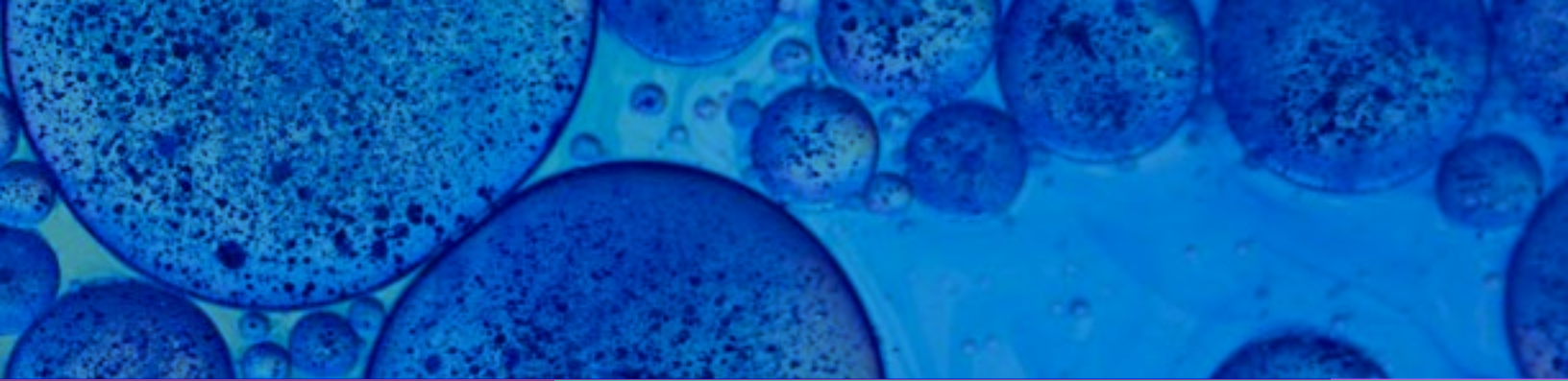
● Grants, Contributions, & Other	\$17.4M
● NRC Indirects	\$4M
● Endowment Payout	\$2.6M

Expenses

● Programs	\$11.4M
● Membership & Council	\$2.1M
● Health Policy Fellowships	\$4.7M
● Operations	\$5.7M







2024 Honor Roll of Donors

Bequest Underscores Philanthropy's Role in Achieving the National Academies' Mission



Dr. Joe W. Gray

In 2024, Dr. Joe W. Gray Professor Emeritus at the Oregon Health and Science University, made a generous \$1 million bequest to the NAM.

Since his induction into the NAM in 2011, Gray has participated in several National Academies of Sciences, Engineering, and Medicine studies and served as chair for the 2022 consensus study report *Leveraging Advances in Modern Science to Revitalize Low-Dose Radiation Research in the United States*.

“The NAM’s mission is essential to the future of health and medicine,” stated Gray. “After reading an article released after the 2024 State of the Union address that was annotated with the Academy’s work, I was inspired to make a legacy gift to the NAM. My gift will continue to ensure the NAM’s work will make a difference in the health of our society for future generations.”

Gray is excited to see medical care substantially advanced by new technologies that inform on the state of disease and the patient, as well as new drugs and drug development that can effectively mitigate disease with minimal side effects. He hopes his gift will help streamline future deployment approaches so that treatments can become widely and democratically available, more quickly and at a lower cost to communities across the globe.

We gratefully acknowledge the support of private contributors to the National Academy of Medicine. The collective, private philanthropy of our members and friends helps to enhance the NAM's mission to lead, inspire innovation, and impact the health of all people.

Lifetime Giving Societies

We gratefully acknowledge the following members and friends who have made generous charitable lifetime contributions. Their collective, private philanthropy enhances the impact of the academies as advisor to the nation on matters of science, engineering, and medicine. We acknowledge contributions made as personal gifts or as gifts facilitated by the donor through a donor-advised fund, matching gift program, or family foundation.

The Lincoln Society

In recognition of members and friends who have made lifetime contributions of \$1 Million or more to the National Academy of Sciences, National Academy of Engineering, or National Academy of Medicine as of December 31, 2024. Boldfaced names are NAM members.

Bruce and Betty Alberts

Richard and Rita* **Atkinson**

Norman R. Augustine

Craig and Barbara Barrett

Jordan and Rhoda Baruch*

Stephen D. Bechtel, Jr.*

Arnold and Mabel Beckman*

Paul Berg*

Leonard Blavatnik

Harry E. Bovay, Jr.*

Donald Bren

George* and Virginia Bugliarello

Sigrid and Vint Cerf

Ralph J.* and Carol M. Cicerone

Ross and Stephanie Corotis

Harvey V. Fineberg and Mary E. Wilson

Bernard M. Gordon

Cecil H. Green*

John O. and Candace E. Hallquist

Michael and Sheila Held*

Jane E. Henney and **Robert Graham**

William R. and Rosemary B. Hewlett*

Ming and Eva Hsieh

Irwin and Joan Jacobs

Robert L.* and Anne K. James

Kenneth A. Jonsson*

Fred Kavli*

Daniel E. Koshland, Jr.*

Jill Howell Kramer

Tillie K. Lubin*

Whitney* and Betty MacMillan

John F. McDonnell

Robin K. and Rose M. McGuire

George P. Mitchell*

The Ambrose Monell Foundation

Gordon and Betty Moore

Philip* and Sima **Needleman**

Peter O'Donnell, Jr.*

Gilbert S. Omenn and Martha A. Darling

Jonathan B. and Donna J. **Perlin**

Robert* and Mayari Pritzker

Richard L. and Hinda G. Rosenthal*

Martine A. Rothblatt

Jack W. and Valerie **Rowe**

Fritz J. and Dolores H. Russ Prize Fund of the Russ College of Engineering and Technology at Ohio University

William Rutter

Bernard and Rhoda Sarnat*

Leonard D. Schaeffer

Sara Lee and Axel Schupf

James H.* and Marilyn Simons

John and Janet Swanson

Marci and James J. Truchard

Tachi* and Leslie **Yamada**

Anthony J. Yun and Kimberly A. Bazar

Anonymous (1)

The Franklin Society

In recognition of members and friends who have made lifetime contributions of \$500,000 to \$999,999 to the National Academy of Sciences, National Academy of Engineering, or National Academy of Medicine as of December 31, 2024. Boldfaced names are NAM members.

John and Pat Anderson

Rose-Marie and Jack R. Anderson*

John and Elizabeth Armstrong

Kenneth E. Behring*

Gordon Bell*

Elkan R.* and Gail F. **Blout**

Russell L. Carson

Charina Endowment Fund

Chau-Chyun and Li-Li Chen

Shu and Kuang-Chung **Chien**

James McConnell Clark*

Barry and Bobbi **Coller**

Henry David*

Richard Evans*

Eugene Garfield Foundation

Theodore Geballe*

Penny and Bill George, George Family Foundation

Christa and Detlef Gloge

William T.* and Catherine Morrison Golden

Jerome H.* and Barbara N. **Grossman**

Wesley L. Harris

John L. Hennessy

Lyda Hill Philanthropies

Alexander Hollaender*

Thomas V. Jones*

Cindy and Jeong Kim
 Douglas E. Koshland
 Ralph and Claire Landau*
 Asta and William W. Lang*
 Marcia K. McNutt
 Ruben F.* and Donna Mettler
 Dane* and Mary Louise Miller
 Oliver E. and Gerda K. Nelson*
 Shela and Kumar Patel
 Richard F. and Terri W. Rashid
 Henry and Susan Samuelli
 Herbert A. and Dorothea P. Simon*
 Raymond and Maria Stata
Roy and Diana **Vagelos**
 Andrew and Erna* Viterbi
 Alan M. Voorhees*
 Anonymous (2)

The Marie Curie Society

In recognition of members and friends who have made lifetime contributions of \$250,000 to \$499,999 to the National Academy of Sciences, National Academy of Engineering, or National Academy of Medicine as of December 31, 2024. Boldfaced names are NAM members.

The Agouron Institute
W.O. Baker*
 Warren L. Batts
 Elwyn* and Jennifer Berlekamp
 Gopa and Arindam Bose
 Paul F. Boulos
 Daniel and Lana Branton
Gail H. Cassell
 Dianne Chong and David Squiers
 Clarence S. Coe*
 Rosie and Stirling A. Colgate*
 W. Dale and Jeanne C. Compton*
 Ruth David and Stan Dains
 Lance and Susan Davis
 Nicholas M. Donofrio
 David and Miriam Donoho
 Ruth and **Victor Dzau**
 James O. Ellis, Jr. and Elisabeth Paté-Cornell
 Dotty* and Gordon England

Edward H. Frank and Sarah G. Ratchye
 William L.* and Mary Kay Friend
 George and Christine Gloeckler
 Paul and Judy Gray
 Diane Greene and Mendel Rosenblum
Diane E. Griffin*
 Ben and Jane Hickin
 Robert A. Hicks*
 Chad and Ann Holliday
 William R. Jackson*
 Anita K. Jones
 Mary and Howard Kehrl*
 Kent Kresa
 Mark and Becky Levin
 Frances and George Ligler
 Azad M. and Carla C. Madni
 Stella and Steve* Matson
William W. McGuire
 Janet and Richard M.* Morrow
 Clayton Daniel and Patricia L. Mote
 Ralph S. O'Connor*
 Kenneth H. Olsen*
 Larry* and Carol Papay
Stephen Quake
 Ann and Michael Ramage
 Simon Ramo*
 Anne and Walt* Robb
 Matthew L. Rogers and Swati Mylavaram
 Julie and Alton D. Romig, Jr.
Stephen and Anne **Ryan***
 Jonathan J. Rubinstein
 Wendy and Eric Schmidt
 H.E. Simmons*
 Charles and Lisa Simonyi
 Pradeep Sindhu and Marie Bertrand
 Robert F. and Lee S. Sproull
 Edward C. Stone*
 Judy Swanson
 Ted Turner
 Leslie L. Vadasz
 Martha Vaughan*
 Charles M.* and Rebecca M. Vest
 Robert* and Robyn Wagoner
 John C. Wall

David Walt and Michele May
 Susan R. Wessler
 Wm. A. Wulf*
 Anonymous (2)

The Einstein Society

In recognition of members and friends who have made lifetime contributions of \$100,000 to \$249,999 to the National Academy of Sciences, National Academy of Engineering, or National Academy of Medicine as of December 31, 2024. Boldfaced names are NAM members.

Nancy Adler*, **Arnold Milstein**, and **Julia Adler-Milstein**

Laura E. and John D. Arnold
 Holt Ashley*
 Nadine Aubry and John L. Batton
 Francisco J.* and Hana Ayala
 William F. Ballhaus, Sr.*

David Baltimore

Thomas D.* and Janice H. Barrow
 H.H. and Eleanor F. Barschall*
 Forest and Kathy Baskett
 Sunanda Basu
 Donald and Joan Beall
 Daniel and Frances Berg
 Diane and Norman Bernstein*
 Bharati and Murty Bhavaraju
 Chip and Belinda Blankenship
 Erich Bloch*
 Barry W. Boehm*
 David G. Bradley

Lewis M. Branscomb*

John and Sharon Brauman
Sydney Brenner*
 Eric A. Brewer
 Corale and Jim Brierley
 Lenore and Rob Briskman
 Malin Burnham
 Ursula Burns and Lloyd Bean*
 Kristine L. Bueche
 Eugen and Cleopatra Cabuz
Christine Cassel and Michael McCally

John K. Castle
 Josephine Cheng

Priscilla and Sunlin* Chou
 Vinay and Uma* Chowdhry
 John and Assia Cioffi
 Paul Citron and Margaret Carlson
 Citron
 James Clark*
 George W.* and Charlotte Clark
 James H. Clark
Ellen Wright Clayton and Jay
 Clayton
 G. Wayne Clough
Fred E. Cohen and Carolyn B.
 Klebanoff
 John D. Corbett*
Pedro M. Cuatrecasas
 Roy Curtiss and Josephine*
 Clark-Curtiss
 Elaine and Erroll Davis
 Jeffrey Dean and Heidi Hopper
 Pablo and Silvia Debenedetti
 Zhonghan John Deng
Peter Dervan and **Jacqueline
 Barton**
Roman W. DeSanctis*
 Julie H. and **Robert J. Desnick**
 Robert* and Florence Deutsch
 Paul M. Doty*
 Charles W. Duncan, Jr.
 George and Maggie Eads
 Robert and Cornelia Eaton
 Emanuel and Peggy Epstein*
 Thomas E. Everhart
 Peter Farrell
 Michiko So* and Lawrence
 Finegold
 Tobie and Daniel J. Fink*
Delbert A. and Beverly C. **Fisher**
 George and Ann Fisher
 Robert C. and Marilyn G. Forney*
 Harold K.* and Betty Forsen
 Efi Foufoula-Georgiou and
 Tryphon Georgiou
 Kenneth R. Fulton
 Yellow H. Gandhi
 Elsa M. Garmire and Robert H.
 Russell
 Melinda F. Gates
 William H. Gates III
 Lou and Robin Gerstner
 Nan and Chuck* Geschke

Jack and Linda Gill
Sid Gilman and Carol Barbour
 Martin E. and Lucinda Glicksman
 Avram Goldstein*
 Robert W. Gore*
 Susan L. Graham and Michael A.
 Harrison
 Robert K. Grasselli* and Eva-
 Maria Hauck-Grasselli
 Corbin Gwaltney*
 Carol K. Hall
Margaret A. Hamburg and Peter
 F. Brown
 William M. Haney III
 George* and Daphne
 Hatsopoulos
 Robert M. Hauser
 John G. Hildebrand and Gail D.
 Burd
 Jane Hirsh
 Jackie and Freeman Hrabowsk
 Yijing and Nils Hultgren
Scott J. Hultgren
 Michael W. Hunkapiller
 Catherine Adams Hutt and **Peter
 Barton Hutt**
 Jennie S. Hwang
 M. Blakeman Ingle
 Kathleen Jamieson
 Trina and **Michael Johns**
Richard B. Johnston, Jr.
 Frank and Pam Joklik
 Trevor O. Jones
 Robert E. Kahn and Patrice A.
 Lyons
 Thomas Kailath
 Paul and Julie Kaminski
Yuet Wai and Alvera **Kan**
 John and Wilma Kassakian
 Michael and Carol Kavanaugh
 Diana S. and Michael D. King
 Leon K. and Olga Kirchmayer*
 David B. Kirk and Caroline Landry
 Frederick A. Klingenstein*
 William I. Koch
 Gail F. Koshland
 Jill Howell Kramer
 Wook Hyun Kwon and Son Cha Yi
 John W. Landis*
 Janet and Barry Lang

Louis Lange
 Ming-wai Lau
Gerald and Doris **Laubach**
 Edward D. Lazowska and Lyndsay
 C. Downs
 David M.* and Natalie Lederman
Peter and Susan **Lee**
 Bonnie Berger and Frank
 Thomson Leighton
 Thomas M. Leps*
 Jane and Norman N. Li
 R. Noel Longuemare, Jr.
 Christian Lütkemeyer
 Asad M., Gowhartaj, and Jamal
 Madni
 Davis L. Masten and Christopher
 Ireland
 Jane and Roger L. McCarthy
Frank McCormick
Michael and Pat **McGinnis**
 Burt* and Deedee McMurty
 D. Nathan Meehan
 Rahul Mehta
 Sabeeha Merchant and **Randy
 Schekman**
 Richard A. and Martha R.
 Meserve
 Robert and Robyn Metcalfe
 G. William* and Ariadna Miller
Ronald D. Miller
 Stanley L. Miller*
 James K.* and Holly T. Mitchell
 Sanjit K. and Nandita Mitra
 Sharon and Arthur Money
 Joe and Glenna Moore
 David* and Lindsay Morgenthaler
 G. Michael Morris
 Cherry A. Murray
 Narayana and Sudha Murty
 Jaya and Venky Narayanamurti
 Ellen and Philip Neches
 Norman F. Ness*
 Ronald and Joan Nordgren
 Susan and Franklin M. Orr, Jr.
 David Packard*
 Roberto Padovani
 Charles and Doris Pankow*
 Jack S. Parker*
 Nirmala and Arogyaswami J.
 Paulraj

Cathy Peercy
Edward E. Penhoet
 Julia M. Phillips and John A. Connor
 Percy A. and Olga A.* Pierre
 Allen E.* and Marilyn Puckett
 Alexander Rich*
 Arthur D. Riggs*
Emanuel P. Rivers
 Ronald L. Rivest
 Eugene* and Ruth Roberts
 Anne K. Roby
 Christopher Rogers
 Howie Rosen and Susan Doherty
 Henry M. Rowan*
 Joseph E. and Anne P. Rowe*
 John M. Samuels, Jr.
 Linda S. Sanford
 Maxine L. Savitz
Charles L. Sawyers
 Walter Schlup*
 Nicole Shanahan
 Heung-Yeung Shum and Ka Yan Chan
 Richard P. Simmons
Harold C. and Carol H. **Sox**
 Georges C. St. Laurent, Jr.
 Arnold and Constance Stancell
 Richard J. and Bobby Ann Stegemeier
 F. William Studier
 Linda Su and Daniel Lin
 Michael Albert and Elizabeth Ann Sutton
 Thomas and Marilyn Sutton
 Charlotte and Morris Tanenbaum
 Sridhar Tayur and Gunjan Kedia
 Peter* and Vivian Teets
 Hemant K. and Suniti Thapar
Samuel O. Thier
 Leonard Kent* and Kayleen Thomas
 James M. Tien and Ellen S. Weston
 Gary and Diane Tooker
 Katherine K. and John J. Tracy
 Holly and Jeff Ullman
 Patricia Bray-Ward and David C.* Ward
James N. Weinstein

Robert* and Joan Wertheim
 Robert M.* and Mavis E. White
 John C. Whitehead*
Jean D. Wilson*
 Ken Xie
 Tilahun D. Yilma
 Yannis and Sheryl Yortsos
 Adrian Zaccaria*
Alejandro Zaffaroni*
 Peter Zandan
Elias A. Zerhouni
 Janet and Jerry Zucker
 Anonymous (4)

NAM Society

In recognition of members and friends of the NAM who have made lifetime contributions totaling \$20,000 to \$99,999 as of December 31, 2024. Boldfaced names are NAM members.

\$75,000 TO \$99,999

Dyanne D. Affonso
 George Barrett
 John K. Castle
Graham A. Colditz and Patti L. Cox
James R. Gavin III
Kelsey C. Martin
Rudi* and Sonja **Schmid**
Joan A. and Thomas A.* **Steitz**
Gail L. Warden
Irving L. Weissman
 Ronald A. Williams

\$50,000 TO \$74,999

Nancy C. Andrews
John R. Ball
Maureen Bisognano
Stuart Bondurant* and Susan Ehringhaus
 Peggy and **Thomas* Caskey**
 Joan and **Purnell W. Choppin**
Molly J. Coye
Tony Gotto
Bradford H. Gray
Martha N. Hill
Tony Hunter

The Henry J. Kaiser Family Foundation
 Kathryn S. and **Peter S. Kim**
Tadamitsu Kishimoto
Mary Anne Koda-Kimble
Woodrow A. Myers, Jr.
Robert M.* and Marilyn R. **Nerem**
 Roslyn and **Stuart H. Orkin**
Thomas and Patty **Pollard**
Larry J. Shapiro
Charles J. Sherr and Martine Roussel
Kenneth I. Shine
 Jacqueline and **Henry Shinefield**
Maxine F. Singer*
Robert E. Tranquada*
 Walter and Marti Unger
Torsten N. Wiesel
Owen N. Witte
Mary Woolley
Keith R. Yamamoto
Huda and William **Zoghbi**
 Anonymous (2)

\$20,000 TO \$49,999

Francois and Doris **Abboud**
Lawrence K. Altman
 G. William and **Barbara Atkinson**
K. Frank Austen*
Ruzena K. Bajcsy
Jack D. Barchas
William G. Barsan
Arthur L. Beaudet
Leslie Z. Benet
J. Claude Bennett
 Mary and **Dennis Bier**
Floyd E. Bloom
Enriqueta C. Bond
Roger J. Bulger
Linda Burnes Bolton*
 Shukti and **Aravinda Chakravarti**
Martin Chalfie and Tulle Hazelrigg
David R. and Jacklyn A. **Challoner**
Yu-Mei Y. Chao
Frank A. Chervenak
Mary Sue Coleman
 Jane and **Worth B.* Daniels, Jr.**
 Nathaniel E. David
Carlos del Rio and Jeannette Guarner

Sue K. Donaldson
 R. Gordon Douglas, Jr.
 Johanna T. Dwyer
 Martha P. and **Mark C. Fishman**
 Linda P. Fried
 Elena and Peter **Fuentes-Afflick**
 Fred H. Gage
 Norman and Deann **Gant**
 Patricia A. Ganz
 Richard L. and Lois E. **Garwin**
 Lewis R. **Goldfrank**
 Garry **Gottlieb** and Derri Shtasel
 Margie and **Larry A. Green**
 Ashley T. Haase
 Eve **Higginbotham** and Frank
 Williams
 Lee **Hood** and Valerie Logan
 Hood
 Susan Band **Horwitz**
 William N. * and Joyce E. **Hubbard**
 Betsy L. **Humphreys**
 Yasmin L. Hurd
 Steven E. **Hyman**
 Richard and Fleur **Hynes**
 Steven E. **Hyman**
 Nancy S. and **Thomas S. Inui**
 Richard D. **Kolodner**
 Keith P. Klugman
 Edward A. and Kathryn F. **Kravitz**
 Judith R. **Lave**
 Cynthia and **Robert Lawrence**
 Alan and Agnes **Leshner**
 Maureen **Lichtveld**
 Ruth **Watson Lubic**
 Patricia and **George Lundberg**
 Christy and John Mack
 JoAnn E. **Manson**
 James S. and Judith M. **Marks**
 Roger O. **McClellan**
 Marie **McCormick** and **Robert**
Blendon
 Bruce **McEwen*** and Karen
 Bulloch **McEwen**
 Elizabeth A. **McGlynn**
 Terry McGuire
 Kelle H. **Moley**
 Van and Barbara **Mow**
 Paul A. **Offit**
 June E. **Osborn**
 Herbert **Pardes***

Michael E. **Phelps**
 E. Albert **Reece**
 Charles M. **Rice III**
 Gene E. **Robinson**
 Judith **Rodin**
 Marco A. Royo
 Gerald M. **Rubin**
 Erkki **Ruoslahti**
 Vinod **Sahney**
 Charles A. **Sanders**
 Susan **Schwartz**
 Christine E. **Seidman**
 Jonathan G. **Seidman**
 Donna E. **Shalala**
 Phillip A. **Sharp**
 Carla J. **Shatz**
 Kevan **Shokat** and Deborah
 Kamali
 Stephen M. **Shortell**
 William and Janet **Stead**
 Rosemary A. **Stevens**
 David K. **Stevenson**
 John D. **Stobo**
 Jeff Tarr, Sr.
 Palmer and Susan **Taylor**
 Margie Malone Tuckson and
 Reed **Tuckson**
 Harold **Varmus**
 Peter K. **Vogt**
 Myron and Linda **Weisfeldt**
 Myrna M. **Weissman**
 Thomas E. **Wellems** and Marilyn
 I. Powell
 Nancy S. **Wexler**
 C. Kern **Wildenthal**
 Warren* and Nikki **Zapol**
 Michael and Leslee **Zubkoff**
 Anonymous (1)

Heritage Society

In recognition of members and friends who have included the National Academy of Sciences, National Academy of Engineering, or National Academy of Medicine in their estate plans or who have made some other type of planned gift to the Academies as of December 31, 2024. Boldfaced names are NAM members.

H. Norman and Idelle
 Abramson*
 Bruce and Betty Alberts
 Gene M.* and Marian Amdahl
 Joan* and Edward Anders
 John C. Angus*
 John and Elizabeth Armstrong
 Norman R. Augustine
Jack D. Barchas
 Harrison H. and Catherine C.
 Barrett
Stanley Baum*
 Clyde J. Behney
 Ruth Behrens
 C. Elisabeth Belmont
 Daniel and Frances Berg
Paul Berg*
Bobbie A. Berkowitz
Elkan R.* and Gail F. **Blout**
Enriqueta C. Bond
 John and Ariel Bowers
 Daniel and Lana Branton
 Corale L. Brierley
 James A. Brierley
 Lenore and Rob Briskman
 Kristine L. Bueche
 George* and Virginia Bugliarello
 Dorit Carmelli
 Charles and Martha Casey
 Peggy and **Thomas* Caskey**
 Barbara and Don Chaffin
 A. Ray Chamberlain*
 Linda and **Frank Chisari**
Rita K. Chow
 Paul Citron and Margaret Carlson
 Citron
 John A. Clements

Morrel H. Cohen

Stanley N. Cohen

Graham A. Colditz and Patti L. Cox

Ross and Stephanie Corotis
Ellis* and Betsy Cowling

Barbara J. Culliton

Glen T. and Patricia B. Daigger

David and Susan Daniel

Tom and Bettie* Deen

Julie H. and **Robert J. Desnick**

Peter N. Devreotes

Ruth and **Victor Dzau**

Gerard W. Elverum

Dotty* and Gordon England

Emanuel and Peggy Epstein*

Harvey V. Fineberg and Mary E. Wilson

Tobie and Daniel J.* Fink

Bruce and Pat Finlayson

Robert C.* and Marilyn G. Forney

William L.* and Mary Kay Friend

Mitchell H. Gail

Arthur and Helen Geoffrion

Irma Gigli

Elizabeth and Paul H.* Gilbert

Martin E. and Lucinda Glicksman

George and Christine Gloeckler

Christa and Detlef Gloge

Joseph W. Goodman

Jane Henney and **Robert Graham**

Bradford H. Gray

Joe W. Gray

Chushiro* and Yoshiko Hayashi

John G. Hildebrand and Gail D. Burd

John R. Howell and Susan Conway

Peter M. Howley

Catherine Adams Hutt and **Peter Barton Hutt**

Nancy S. and **Thomas S. Inui**

Anthony A. James and Cynthia K. French

Richard B. Johnston, Jr.

Anita K. Jones

Michael Katz and Robin J. Roy

Michael and Carol Kavanaugh

K.I.I. Kellermann

Diana S. and Michael D. King

Darrell G. Kirch

Michael D. Lairmore

Norma M. Lang

Brian A. Larkins

Joel L. Lebowitz

Marigold Linton and Robert Barnhill

Daniel P. Loucks

Ruth Watson Lubic

R. Duncan* and Carolyn Scheer Luce

Thomas* and Caroline Maddock

Asad and Taj Madni

Rudolph A. Marcus

Pat and Jim McLaughlin

Jane Menken

Sharon and Arthur Money

Van and **Barbara Mow**

Guido Munch*

Mary O. Mundinger

Philip* and **Sima Needleman**

Norman F. Ness*

Ronald and Joan Nordgren

Godfrey P. Oakley

Gilbert S. Omenn and Martha A. Darling

Bradford W. and Virginia W. Parkinson

Zack T. Pate*

Neil and Barbara Pedersen

Cathy and Paul S.* Peercy

Thomas and **Patty Pollard**

Louis J. Ptacek

James J. Reisa, Jr.

Emanuel P. Rivers

Richard J.* and Bonnie B. Robbins

Eugene* and Ruth Roberts

Julie and Alton D. Romig, Jr.

James F. Roth*

Esther and Lewis* Rowland

Sheila A. Ryan

Paul R. Schimmel

Stuart F. Schlossman

Rudi* and Sonja Schmid

Vern L. and Deanna D. Schramm

Lyle H. Schwartz

Susan C. Scrimshaw

Kenneth I. Shine

Arnold and Constance Stancell

H. Eugene Stanley

Harold Stark

Rosemary A. Stevens

John and Janet Swanson

Esther Sans Takeuchi

Paul* and Pamela Talalay

Walter and Marti Unger

Robert and Robyn Wagoner

John C. Wall

Patricia Bray-Ward and David C. Ward*

Clare M. Waterman

Myron and Linda **Weisfeldt**

Robert* and Joan Wertheim

C. Kern Wildenthal

Gail* and **Robert Wilensky**

Donald and Linda Winter

Maw-Kuen Wu

Wm. A. Wulf*

Tilahun D. Yilma

Michael Zubkoff and Leslee Michaels

Anonymous (3)

Loyalty Society

In recognition of members and friends who have made gifts to the National Academy of Sciences, the National Academy of Engineering, or the National Academy of Medicine for at least 20 years as of December 31, 2024. Boldfaced names are NAM members.

Francois M. Abboud

Andreas and Juana Acrivos

Stephen L. Adler

Dyanne D. Affonso

Bruce and Betty Alberts

Barbara W. Alpert

Lawrence K. Altman

John and Pat Anderson

Wyatt W. Anderson

John C. Angus

John and Elizabeth Armstrong

K. Frank Austen

Joan K. Austin

Arthur B. and Carol Baggeroer

Donald W. Bahr

John R. Ball**Jack D. Barchas**

William A. Bardeen

Clyde F. Barker**Jeremiah A. Barondess****Angela Barron McBride**

Gordon A. Baym and Cathrine Blom

Zdenek P. Bazant

Terry and Roger N. Beachy

Marlene and Georges Belfort

Gordon Bell

Leslie Z. Benet

Joan Wennstrom Bennett

Paul Berg***Kenneth I. Berns***

Carla F. Berry

Mina J. Bissell**Floyd E. Bloom**

Jack L. Blumenthal

Enriqueta C. Bond**Richard J. Bonnie**

Lillian C. Borrone

Kathleen and H. Kent Bowen

L. Thompson Bowles

John* and Sharon Brauman

Paula A. Braveman

W. F. Brinkman

Donald D. Brown

Joseph A. Buckwalter and**Kathleen Coen Buckwalter**

Kristine L. Bueche

Jack E. Buffington

George* and Virginia Bugliarello

Martin J. Bukovac*

Eugenio Calabi

James D. Callen

Francois J. Castaing

Webster and Jill Cavenee

Barbara and Don Chaffin

David R. and Jacklyn A. Challoner**Rita K. Chow**

Ralph J.* and Carol M. Cicerone

George W. Clark

Michael and Adriana Clegg

John A. Clements

Linda Hawes Clever

G. Wayne Clough

Marshall H. Cohen

Morrel H. Cohen

Mary Sue Coleman**Barry and Bobbi Collier**

R. John Collier

Richard A. Conway

R. James and Beverly Cook

Max D. Cooper

Nicholas R.* and Linda A. Cozzarelli

Pedro M. Cuatrecasas**Barbara J. Culliton**

Roy Curtiss and Josephine* Clark-Curtiss

G. Brent and Sharon A. Dalrymple

James E. Darnell, Jr.

Ruth David and Stan Danis

Lance and Susan Davis

Igor B.* and Keiko Dawid

Pablo and Silvia Debenedetti

Mary and Raymond Decker

Tom and Bettie* Deen

David L. Denlinger

Roman W. DeSanctis*Julie H. and **Robert J. Desnick****Don E. Detmer****William H. Dietz****Salvatore DiMauro**

Nicholas M. Donofrio

Albert A. Dorman

Irwin Dorros

R. Gordon Douglas, Jr.

Earl H. Dowell

E. Linn Draper, Jr.

James J. Duderstadt*

Lewis S. Edelheit

David and Lucy T. Eisenberg

Robert and Ingrid Eisenman

Gerard W. Elverum

Robert M. Epstein

W. G. Ernst

Caswell A. Evans, Jr.

John V. Evans

Thomas E. Everhart

Gary Felsenfeld*

Stanley Fields

Harvey V. Fineberg and Mary E.

Wilson

Tobie and Daniel J.* Fink

Delbert A. and Beverly C. Fisher

Susan Fiske

Edith M. Flanigen

Kent V. Flannery

Samuel C. Florman*

G. David Forney, Jr.

Harold K.* and Betty Forsen

T. Kenneth Fowler

Hans* and Verena Frauenfelder

Carl Frieden

William L.* and Mary Kay Friend

Eli Fromm

Douglas W. and Margaret P.

Fuerstenau

Fred H. Gage**Mitchell H. Gail**

Theodore V. Galambos

Joseph G. Gall*

Elisabeth Gantt

Martin Gellert

Lou and Robin Gerstner

Nan and Chuck* Geschke

John P. Geyman

Elizabeth and Paul H.* Gilbert

David Ginsburg

David V. Goeddel

Lewis R. Goldfrank

Richard J. Goldstein

Joseph W. Goodman

Richard M. Goody

Enoch Gordis**Emil C. Gotschlich**

Roy W. Gould

Bradford H. Gray

Priscilla and Paul E.* Gray

Shirley and Harry Gray

Robert B. Griffiths

Paul F. Griner**Michael Grossman**

Hermann K. Gummel

Ashley T. Haase

Edward E. Hagenlocker

Philip C. Hanawalt

Wesley L. Harris

Stanley R. Hart

Robert M. Hauser

Janina and Siegfried Hecker

Donald R. Helinski

Adam Heller

John L. Hennessy

Jane Henney and Robert Graham

Arthur H. Heuer

George J. Hirasaki

John P. Hirth
 David and Susan Hodges
 Joseph F. Hoffman
 Frank Hole
Thomas F. Hornbein
Peter M. Howley
 Sarah and Dan Hrdy
Barbara S. Hulka
 Catherine Adams Hutt and **Peter Barton Hutt**
Richard and Fleur **Hynes**
 Nancy S. and **Thomas S. Inui**
 Robert L.* and Anne K. James
 Paul C. Jennings
 James O. Jirsa
 Donald L. Johnson
 Frank and Pam Joklik
 Anita K. Jones
 Marshall G. Jones
Michael M. Kaback
 Paul and Julie Kaminski
 Melvin F. Kanninen
 John and Wilma Kassakian
Samuel L. Katz and **Catherine M.* Wilfert**
 James R.* and Isabelle Katzer
 K. I. I. Kellermann
 Charles F. Kennel
 Judson and Jeanne King
 Andrew H. Knoll
 Joanne and Leon* Knopoff
 Albert S. and Elizabeth M. Kobayashi
 Bill and Ann Koros
 Jill Howell Kramer
Edward A. and Kathryn F. **Kravitz**
Norma M. Lang
 James S. and Elinor G. A. Langer
 Louis J. and M. Yvonne DeWolf Lanzerotti
 Gerald and Doris **Laubach**
Judith R. Lave
 Cynthia and **Robert Lawrence**
 Marvin & Annette Lee
 Foundation: David Lee, Trustee
 Anthony Leggett
 Ellen Lehman
 I. Robert Lehman
 Margaret A. LeMone

Alan and Agnes **Leshner**
 Johanna M.H. Levelt Sengers*
Howard Leventhal
 Gene E. Likens
 Peter W. Likins
 Nathan and Barbara Liskov
 Jack E. Little
 Robert G. Loewy
 Jane Lubchenco and Bruce Menge
 R. Duncan* and Carolyn Scheer Luce
 J. Ross Macdonald*
 Anthony P. Mahowald
 Donald C. Malins
Vincent T. Marchesi
 Joyce Marcus
 Rudolph A. Marcus
 William F. Marcuson, III
 Robert C. Marini
 Margo P. Marshak
Ida M. Martinson
 Douglas S. Massey
 David and Diane Matlock
 Robert D. Maurer
 William C. Maurer
Roger O. McClellan
Marie McCormick and **Robert Blendon**
 Christopher F. McKee
 Marcia K. McNutt
 Richard A. and Martha R. Meserve
Louis H. Miller
 James K.* and Holly T. Mitchell
 Duncan T. Moore
 Peter B. Moore
 A. Stephen Morse
John H. Moxley III*
 Sezaki K. Mtingwa
 Darla and George E.* Mueller
 Earl M. Murman
 Elaine Nadler
 Albert Narath
 Jaya and Venky Narayanamurti
Philip* and Sima **Needleman**
 John Neerhout, Jr.
 Stuart O. Nelson
Liz and Ben **Neufeld**
Elena* and Stuart **Nightingale**

William D. Nix
 Ronald and Joan Nordgren
Charles P. O'Brien
Gilbert S. Omenn and Martha A. Darling
 Gordon H. Orians
 Jeremiah P. Ostriker
 Larry* and Carol Papay
 Barbara H. Partee
Robert E. Patricelli
 Aliene and Thomas K. Perkins
Jeffrey L. Platt
Thomas and Patty **Pollard**
Deborah E. Powell
 William F. Powers
 Michael Prats
 William H. Press and Jeffrey Howell
 Roberta and Edwin Przybylowicz
 Roy Radner* and Charlotte Kuh
 Eli Reshotko
 Kenneth A. Ribet
Charles M. Rice III
Charles C. Richardson
 Jerome G. Rivard
 C. Ruth and Eugene* Roberts
 Bernard I. Robertson
 Julie and Alton D. Romig, Jr.
Erkki Ruoslahti
 Vinod K. Sahney
 Linda S. Sanford
 Maxine L. Savitz
 Sabeeha Merchant and **Randy Schekman**
Joseph E. Scherger
Gerold L. Schiebler
 Richard Schoen and Doris Fischer-Colbrie
 William R. Schowalter
 Sara Lee and Axel Schupf
 Henry G. Schwartz
 Lyle H. Schwartz
 Mischa Schwartz
 John H. Schwarz
 Robert J. Serafin
 F. Stan Settles
Iris R. Shannon
Larry J. Shapiro
Charles J. Sherr and Martine F. Roussel

Kenneth I. Shine**Stephen M. Shortell****Edward H. Shortliffe**

Arnold H. Silver

Maxine F. Singer*

Jack M. Sipress

Harold C. and Carol H. **Sox**

Patricia G. Spear

Georges C. St. Laurent, Jr.

Raymond S. Stata

Richard J. and Bobby Ann
Stegemeier

Gunter Stein

Joan A. Steitz**Rosemary A. Stevens**

Kenneth H. Stokoe

Edward C. Stone*

Richard G. Strauch

Lubert* and Andrea Stryer

F. William Studier

James M. Symons

Charlotte and Morris Tanenbaum

Samuel O. ThierJames M. Tien and Ellen S.
Weston

Maury Tigner

Neil E. Todreas

George H. Trilling

Roxanne and Karl K.* Turekian

Michael S. Turner

Roy and Diana **Vagelos****Harold Varmus**

Charles M.* and Rebecca M. Vest

Andrew and Erna* Viterbi

Peter K. Vogt

Peter and Josephine von Hippel

Thomas H. and Dee M. Vonder
Haar

Irving T. Waaland

Robert* and Robyn Wagoner

David B.* and Marvalee H. Wake

Edward E. Wallach

Steven J. Wallach

Gail L. Warden**Kenneth E. Warner**

Darsh T. Wasan

George D. Watkins

John T. and Diane M. Watson

Sheldon Weinig

Herbert Weissbach

Jasper A. Welch, Jr.

Raymond P. White, Jr.

Robert M.* and Mavis White

Ward O. Winer

Evelyn M. Witkin

Owen N. Witte

Edgar S. Woolard, Jr.*

Carl Wunsch

Tachi* and Leslie **Yamada**

Ben T. Zinn

Michael and Leslee **Zubkoff**

Anonymous (1)

Great Hall Society (Annual Giving Society)

The Great Hall Society, the National Academies' annual giving society, recognizes donors who make leadership-level gifts at two levels: the silver level, for annual gifts totaling \$5,000–\$9,999, and the gold level, for annual gifts totaling \$10,000 or more. Annual funding provides resources that support ongoing activities and outreach efforts while also enabling the National Academies to respond to emerging issues facing the nation and world in a timely manner every year. We gratefully acknowledge the following members and friends who joined the Great Hall Society in 2024. Boldfaced names are NAM members.

GOLD LEVEL (\$10,000+)

Dyanne D. Affonso

Alice Merner Agogino

Bruce and Betty Alberts

John and Pat Anderson

Nancy C. Andrews

John and Elizabeth Armstrong

Richard and Rita* **Atkinson**

Jane K. and William F. Ballhaus, Jr.

Peter Dervan and **Jacqueline
Barton**

Donald and Joan Beall

Thomas Becker*

May R. Berenbaum

Paul Berg*

Rosina M. Bierbaum

Ellen Boer

Rudy and Anna Bonaparte

Gopa and Arindam Bose

Paul F. Boulos

John* and Sharon Brauman

Christopher S. Bretherton

Eric A. Brewer

Corale and Jim Brierley

Wesley G. Bush

Eugen and Cleopatra Cabuz

Sigrid and Vint Cerf

Chau-Chyun and Li-Li Chen

Josephine Cheng

Shu and Kuang-Chung **Chien**

Dianne Chong and David Squiers

Priscilla Chou

Vinay Chowdhry

Steven Chu

Ralph J.* and Carol M. Cicerone

Paul Citron and Margaret Carlson
Citron

David D. Clark

Ellen Wright Clayton and Jay
Clayton

John A. Clements*

Fred E. Cohen and Carolyn B.
Klebanoff**Graham A. Colditz** and Patti L.
Cox**Barry** and Bobbi **Coller**

Harry M. Conger, IV

R. James and Beverly Cook

Ross and Stephanie Corotiss

Roy Curtiss and *Josephine
Clark-Curtiss

Ruth David and Stan Dains

Elaine and Erroll Davis

Aart de Geus and Esther John

Jeffrey Dean and Heidi Hopper

Pablo and Silvia Debenedetti

Julie H. and **Robert J. Desnick**

Sevgi and Ali Dogru

Nicholas M. Donofrio

David and Miriam Donoho

Fiona M. Doyle and Stephen C.
Blair

Bob and Ann Dynes

Ruth and **Victor Dzau**
 James O. Ellis, Jr. and Elisabeth Paté-Cornell
 Dotty* and Gordon England
 Delores M. Etter
 Nina Fedoroff
Harvey V. Fineberg and Mary E. Wilson
 Efi Foufoula-Georgiou and Tryphon Georgiou
 Edward H. Frank and Sarah G. Ratchye
 David A. Friedman and Paulette J. Meyer
 Kenneth R. Fulton
 Lou and Robin Gerstner
Joseph L. Goldstein
 Joseph W. Goodman
 Roy W. Gould*
 Fan C. Graham
Jane E. Henney and **Robert Graham**
 Susan L. Graham and Michael A. Harrison
 E. Peter Greenberg
Diane E. Griffin*
 Jerome H.* and Barbara N. Grossman
 Ashraf Habibullah
 Carol K. Hall
 John O. and Candace E. Hallquist
Margaret A. Hamburg and Peter F. Brown
 Kathleen M. Harris
 Wesley L. Harris
 Caroline S. Harwood
 Robert K. Grasselli* and Eva-Maria Hauck-Grasselli
 Robert Mason Hauser
 John L. Hennessy
 Jane Henney and Robert Graham
 John G. Hildebrand and Gail D. Burd
 Lyda Hill Philanthropies
Brigid L. Hogan
 Chad and Ann Holliday
 Bahman Hoveida
 Jackie and Freeman Hrabowski
 Sarah and Dan Hrdy
 Yingzhi and Xuedong (XD) Huang

Nils and Yijing Sun Hultgren
Scott J. Hultgren
 Michael W. Hunkapiller
George J. Isham
 Irwin and Joan* Jacobs
 Anthony A. James and Cynthia K. French
 Kathleen Jamieson
 Frank and Pam Joklik
 Fred Kavli*
 Terri L. Kelly
 Kathryn S. and **Peter S. Kim**
 David B. Kirk and Caroline Landry
Mary Anne Koda-Kimble
 Gail F. Koshland
 Douglas E. Koshland
 Patricia Kuhl and Andrew Meltzoff
 H.T. and Ling-Ling Kung
 Wook Hyun Kwon and Son Cha Yi
 Lois and Butler Lampson
 Neal F. Lane
 Louis Lange
 David C. Larbalestier
 Edward D. Lazowska and Lyndsay C. Downs
 Kai Li
 Jane and Norman N. Li
 Frances and George Ligler
 Christian Lütkemeyer
 James L. Manley
 W. Allen Marr
Kelsey C. Martin
 Roger L. McCarthy
Frank McCormick
 John F. McDonnell
 Laura J. McGill
Michael and Pat **McGinnis**
 Robin K. and Rose M. McGuire
 Marcia K. McNutt
 D. Nathan Meehan
 Richard A. and Martha R. Meserve
 David G. Messerschmitt
 Maureen Miller*
 The Moore Family
 Charles W. Moorman
 G. Michael Morris
 Cherry A. Murray
 Jagdish Narayan
 Ellen Ochoa

Thomas J. O'Neil
 Susan and Franklin M. Orr, Jr.
 Thomas and Jo Overbye
 Larry* and Carol Papay
 David and Linda Patterson
 Cathy Peercy
 Fernando C. Pereira
Jonathan B. and Donna J. **Perlin**
Michael E. Phelps
 Julia M. Phillips and John A. Connor
Thomas and Patty **Pollard**
 Dana A. Powers
 William H. Press and Jeffrey Howell
Carol L. Prives
Stephen Quake
 Richard F. and Terri W. Rashid
 Buddy Ratner and Cheryl Cromer
Emanuel P. Rivers
 Ronald L. Rivest
 Anne K. Roby and Lawrence Dodd
 Christopher Rogers
 Julie and Alton D. Romig, Jr.
 Howie Rosen and Susan Doherty
Gerald M. Rubin
 William J. Rutter
 Henry and Susan Samuelli
 John M. Samuels, Jr.
 Jerry Sanders III
 Linda S. Sanford
 Jose G. Santiesteban
 Maxine L. Savitz
Charles L. Sawyers
 Sophie Sawyers
 Mary Schafrik
 John H. Schmertmann
 Wendy and Eric Schmidt
 Susan Schwartz
 Charles L. Seitz
 Jacqueline and **Henry Shinefield**
 Heung-Yeung Shum and Ka Yan Chan
 Charles and Lisa Simonyi
 Jennifer Sinclair Curtis
 Carol H. and **Harold C. Sox**
 Robert F. and Lee S. Sproull
 Raymond S. Stata
 F. William Studier

Thomas and Marilyn Sutton
 Anne Swenson
 Hemant K. and Suniti Thapar
 James M. Tien and Ellen S.
 Weston
 William F. Tinney*
 Katherine K. and John J. Tracy
 Suzanne M. Vautrinot
 Andrew and Erna* Viterbi
 John C. Wall
David Walt and Michele May
 Darsh T. Wasan
Irving L. Weissman
 Susan R. Wessler
 Ruth Williams and Bill Helton
 Jie Xue
Keith R. Yamamoto
 Taiyin Yang
 Tilahun D. Yilma
 Anthony J. Yun and Kimberly A.
 Bazar
 Sandra Zaccaria
Elias A. Zerhouni
 Charles F. Zukoski
 Anonymous (5)

SILVER LEVEL (\$5,000-\$9,999)

John E. Abele
 Linda M. Abriola and Larry M.
 Albert
 Ilesanmi and Patience Adesida
 Vickie G. and David J. Allstot
 Jeanne Altmann
Frances H. Arnold
 Wanda M. and Wade Austin
Ruzena K. Bajcsy
 Terry and Roger N. Beachy
Arthur L. Beaudet
 Howard Bernstein
 Marie McCormick and **Robert
 Blendon**
 Mark T. Bohr
Jeanne Brooks-Gunn
Michael S. Brown
 John H. Bruning
 Robert Bryant and Réymundo
 Garcia
 Martin J. Bukovac*
 Christopher B. Burke
 Claude R. Canizares

Christine K. Cassel
 Heide G. Castleman
 Babu R. Chalamala
 Vicki L. Chandler
Frank A. Chervenak
 Margaret S.Y. Chu and Tze-Yao
 Chu
**Christos Coutifaris and Deborah
 Driscoll**
 Karen and Steve Crouch
 Johann Deisenhofer
Carlos del Rio and Jeannette
 Guarner
 Hariklia Deligianni
Sue K. Donaldson
Gail D'Onofrio and **Robert Galvin**
 Robert D. Drennan
 Deborah Driscoll and Christos
 Coutifaris
 Anne M. Duderstadt
 Abbas El Gamal
 Janan and John Eppig
 Bruce and Pat Finlayson
 Stephen P. Fodor
 Stephen R. Forrest
Stephen P. Fortmann
Elena and Peter **Fuentes-Afflick**
 Douglas W. and Margaret P.
 Fuerstenau
 Rajeev Gautam
Julie L. Gerberding
 Gary J. Goldberg
Tony Gotto
 Deborah L. Grubbe and James B.
 Porter, Jr.
 Mary Lou Guerinot and Rob
 McClung
 Eliyahou Harari
 Arthur Hebard
 Chris T. and Kathleen
 Hendrickson
Katherine A. High
Martha N. Hill
 Urs Höelzle
 John R. Huff
Tony Hunter
 Mary Jane and Vernon Irwin
 Lisa P. Jackson
 Michael R. Johnson
Richard B. Johnston, Jr.

Robert E. Kahn and Patrice A.
 Lyons
 Eric W. and Karen F. Kaler
 Paul and Julie Kaminski
 John and Wilma Kassakian
Tadamitsu Kishimoto
Richard D. Kolodner
Edward A. and Kathryn F. **Kravitz**
 Kent Kresa
 Ellen J. Kullman
 Joseph Langsam
 Enrique J. Lavernia
 Richard and Madeleine Lenski
Alan and Agnes **Leshner**
 Marion Ein Lewin
 Peggy Mac Rae
 Kiran Mazumdar-Shaw
 Piotr D. Moncarz
James A. Morone
 Jan and E. Phillip* Muntz
 Michael A. Mussallem
 Jaya and Venky Narayanamurti
 Ronald and Joan Nordgren
 Matt O'Donnell
 Gordon H. Orians
 Roberto Padovani
 David Parrillo
 Wayne Pfeiffer
 Nancy N. Rabalais
 Srilatha and Prabhakar
 Raghavan
 Marc H. Raibert
 Elsa Reichmanis
 John F. and Diane Reid
 Kenneth A. Ribet and Lisa R.
 Goldberg
 Ronald S. Robinson
Judith Rodin
 Mary Ann and Thomas Romesser
 Henry M. Rowan*
 Barbara E. Rusinko
 William and Emily Sanders
 Barbara Schaal and Joe Leverich
 Donna and Jan Schilling
 Fred B. Schneider and Mimi
 Bussan
 Julie M. Schoenung
 Lyle H. Schwartz
 Dominick M. Servedio
Larry J. Shapiro

Carla J. Shatz

Michael Shelley
 Deepika B. Singh
 Larry L. Smarr
 Arnold and Constance Stancell

David K. Stevenson**Jerome F. Strauss III**

Virginia and Carl Sulzberger

Samuel O. Thier

Linda Beth and James M. Tiedje

Jean W. Tom and Richard A.

Register

Katherine Tracy

John R. Treichler

Susan Trumbore

David M. and Elaine Van Wie

Robert* and Robyn Wagoner

Myrna M. Weissman

J. Turner Whitted

Carl E. Wieman

Charlton Wilson

Ward O. and Mary Jo Winer

Michael S. Witherell

Owen N. Witte**Mary Woolley**

Margaret M. Wu

Israel J. Wygnanski

Murty V.V.S. and Bhavani Yalla

Yannis and Sheryl Yortsos

Jie Zhang

Foundations, Corporations, and Other Organizations

In recognition of foundations, corporations, and other organizations that made gifts or grants of \$5,000+ to support the National Academy of Medicine in 2024.

AARP

Accreditation Council for
Graduate Medical Education

American Academy of Nurse
Practitioners

American Academy of Nursing

American Board of Family
Medicine

American Endowment
Foundation

American Heart Association

American Medical Association

American Nurses Association

American Psychiatric Association

Ascension Health

AstraZeneca Pharmaceuticals LP

Blue Shield of California
Foundation

Brigham and Women's Hospital

California Health Care
Foundation

Cardinal Health, Inc.

Cencora

The Council of Medical Specialty
Societies

CVS Health

Dignity Health

Doris Duke Foundation

East Bay Community Foundation

Elevance Health, Inc.

Epic Systems

Essential Hospitals Institute

The Ford Foundation

Freedom Together Foundation

The Bill & Melinda Gates
Foundation

Google LLC

Greater Horizons

Healing Works Foundation

Healthcare Distribution Alliance

Hospital Corporation of America

J.P. Morgan Charitable Giving
Fund

Johnson and Johnson Inc.

The Joint Commission

W.M. Keck Foundation

Lanson Foundation

Mazzetti Inc.

McKesson Corporation

Medical College of Wisconsin

Medtronic, Inc.

Merck & Company, Inc.

Missouri Foundation for Health
 The Gordon and Betty Moore
 Foundation
 Nebraska Medicine
 Novo Nordisk
 The Ohio State University
 Patient-Centered Outcomes
 Research Institute
 Providence Health & Services
 The Public Good
 Fannie E. Rippel Foundation
 The Robert Wood Johnson
 Foundation
 The Rockefeller Foundation

Royal Bank of Canada
 The Simons Foundation
 Stanford Healthcare
 UnitedHealth Group, Inc.
 University of Colorado, Boulder
 University of Massachusetts
 University of Michigan
 University of Pittsburgh
 University of Pittsburgh Medical
 Center
 University of Utah
 Vanderbilt University
 Verily Life Sciences
 Vizient

Joan and Sanford I. Weill Medical
 College & Graduate School
 Wells Fargo & Company
 Zerhouni Family Charitable
 Foundation, Inc.




We have made every effort to list donors accurately and according to their wishes. If we have made an error, please accept our apologies and contact the Office of Development at 202-334-2431 or namgiving@nas.edu so we can correct our records.



(L-R): Mitchell Gail, Michael Weisfeldt, Gilbert Omenn, Fred Cohen, Charles Sawyer, Victor J. Dzau, Ruth Dzau, Harvey Fineberg, Mary Wilson, and E. Albert Reece.



Connect with us at [NAM.edu](https://www.nam.edu)

NAMedicine@nas.edu |   
500 5th Street, NW | Washington, DC 20001